

# 25 YEARS OF CREATING LASTING SOLUTIONS



2009 ANNUAL REPORT



# CREATING LASTING SOLUTIONS ENDING HOMELESSNESS ONE FAMILY AT A TIME ONE PERSON AT A TIME FOR 25 YEARS IN OUR COMMUNITY

## 25 YEARS OF CREATING LASTING SOLUTIONS.

The Colorado Coalition for the Homeless has ended homelessness for tens of thousands of people over the past 25 years. What began as a grassroots organization has grown into a comprehensive solution to homelessness that helps more than 16,000 people each year.

Ending homelessness takes leadership to ensure national and state policies address the needs of our homeless families and individuals. It takes expertise in complex real estate transactions to purchase land and develop affordable housing. It takes productive private and public partnerships to replicate our work statewide. It takes a highly refined continuum of integrated programs and services to improve the health and well-being of homeless families and individuals. It takes experience to demonstrate that housing one chronically homeless individual saves taxpayers \$31,545 per year in emergency service expenses, and that developing quality housing revitalizes neighborhoods and stimulates local economies. But most importantly, it takes the compassion of a dedicated staff who work tirelessly for each man, woman or child with no place to sleep tonight.

During the past 25 years, we've met our challenges with creativity and an unwavering commitment to ending homelessness. This year we faced a daunting 20 percent increase in the need for our services in conjunction with devastating funding cuts. Yet, with the help of our partners and supporters, we continued to develop effective programs and increase organizational efficiencies in order to advance our mission. In 2009:

- We implemented a statewide Homeless Prevention and Rapid Re-Housing program to prevent homelessness and to quickly move those on the streets or in shelters into housing.
- We began construction of the Renaissance Uptown Lofts, our 16th affordable housing development community. By early 2011, 98 new, environmentally friendly apartments will become homes for homeless and low-income residents.
- We expanded our health care services for chronically homeless individuals by opening a new clinic at Denver's St. Francis Center and by providing enhanced, street-based medical and mental health treatment services delivered through our Street Outreach team.

We envision a time when homelessness doesn't exist. As we reflect on the progress we've made during the past 25 years, we renew our strong commitment to create lasting solutions to homelessness in Colorado, as long as we are needed.

We're grateful for your help.



Jay Brown  
Board Chair



John Parvensky  
President and CEO



# 25 YEARS OF BUILDING HOMES



Follow our progress at Renaissance Uptown Lofts by visiting the Annual Report page at [www.coloradocoalition.org](http://www.coloradocoalition.org)

An underlying cause of homelessness for families with children is the lack of affordable housing in their communities. In Colorado, there is an estimated need for 30,000 additional affordable homes.

In our 25 years of service, we have developed 1,400 homes in Colorado and continue to develop new properties for homeless families and individuals. Our 15 housing developments provide services such as counseling, financial literacy and employment assistance to ensure future housing stability.

The Coalition develops housing that adds value to Colorado neighborhoods and creates pride. Our newest developments are architecturally appealing and environmentally friendly. Properties are well maintained and often increase economic activity in their communities.

# 25 YEARS OF PROVIDING OPPORTUNITY



Learn about Renaissance Works employee, Don, and Snooze employee, Rob, by visiting the Annual Report page at [www.coloradocoalition.org](http://www.coloradocoalition.org)

Job loss is cited as a leading cause of homelessness. Unemployment rates soared in 2009 and homeless individuals without fixed addresses or stable living conditions faced additional challenges securing and maintaining jobs.

Renaissance Works is an innovative program to help our clients get back to work quickly. We are employing homeless individuals to help build the apartments they will later call home. Clients gain both an affordable home and transferable career skills to help ensure future employment.

The Coalition's Employment and Vocational Services helped 355 individuals with their job searches in 2009.



## Merchants Office Furniture

"We are a family business and our employees are part of that family," says Jynx Sanders of Merchant's Office Furniture and Vice President of the Ballpark Neighborhood Association. "Our experience hiring individuals who are homeless has been positive – and it means one more person can move off the street."

## Snooze

Jon Schlegel says that hiring homeless individuals from the neighborhood is, "Good for the soul of the business and good for the community." Two Snooze employees are formerly homeless and their work at Snooze is helping stabilize their lives.



# 25 YEARS OF PROMOTING GOOD HEALTH

Co-pays and the cost of prescription medications often prevent homeless families and individuals from seeking medical and mental health care. The Coalition addresses these barriers by providing integrated health care services for homeless adults and children, including: wound care, infection treatments, immunizations and flu shots, diabetes and hypertension care, pre-natal and well baby care, prescription medications, dental care, and comprehensive mental health services.

The Stout Street Clinic also offers specialized pediatric care and, through the work of volunteers, recently opened a dedicated pediatric eye clinic.

Care provided through the Coalition's Stout Street Clinic means earlier diagnosis and treatment of illnesses, more preventative care, and far fewer visits to our community hospitals' emergency rooms. The Stout Street Clinic has provided service in the metro Denver area for 25 years and served 13,947 homeless adults and children in 2009.



# 25 YEARS OF REACHING OUT

Outreach workers engaged with 4,458 homeless individuals in 2009. The Outreach team meets people where they are, both physically and psychologically, by linking them to health care, mental health, and substance treatment services on the streets.

This team is not deterred by weather, the time of day, or personal client challenges. Our staff says, "We are here, we will walk with you on your path to recovery, every step of the way." We build a relationship with the individual, discover their barriers to housing and connect them to supportive services and safe, affordable homes.

The Denver Street Outreach Collaborative moved 326 people from the streets into housing in 2009.



## 25 YEARS OF **INSPIRING SUCCESS**



Five years ago, Alma and her young children were facing homelessness. Alma had an eighth grade education and felt she had no hope for a decent job. However, through the Coalition's Family Support Services program she found much more than a stable home – Alma found the chance for a brighter future. Seeing Alma's potential, her case manager taught her how to use a computer. Alma has now finished her G.E.D. and is studying to become a paralegal. Alma and her family have lived in safe, permanent housing for four years.

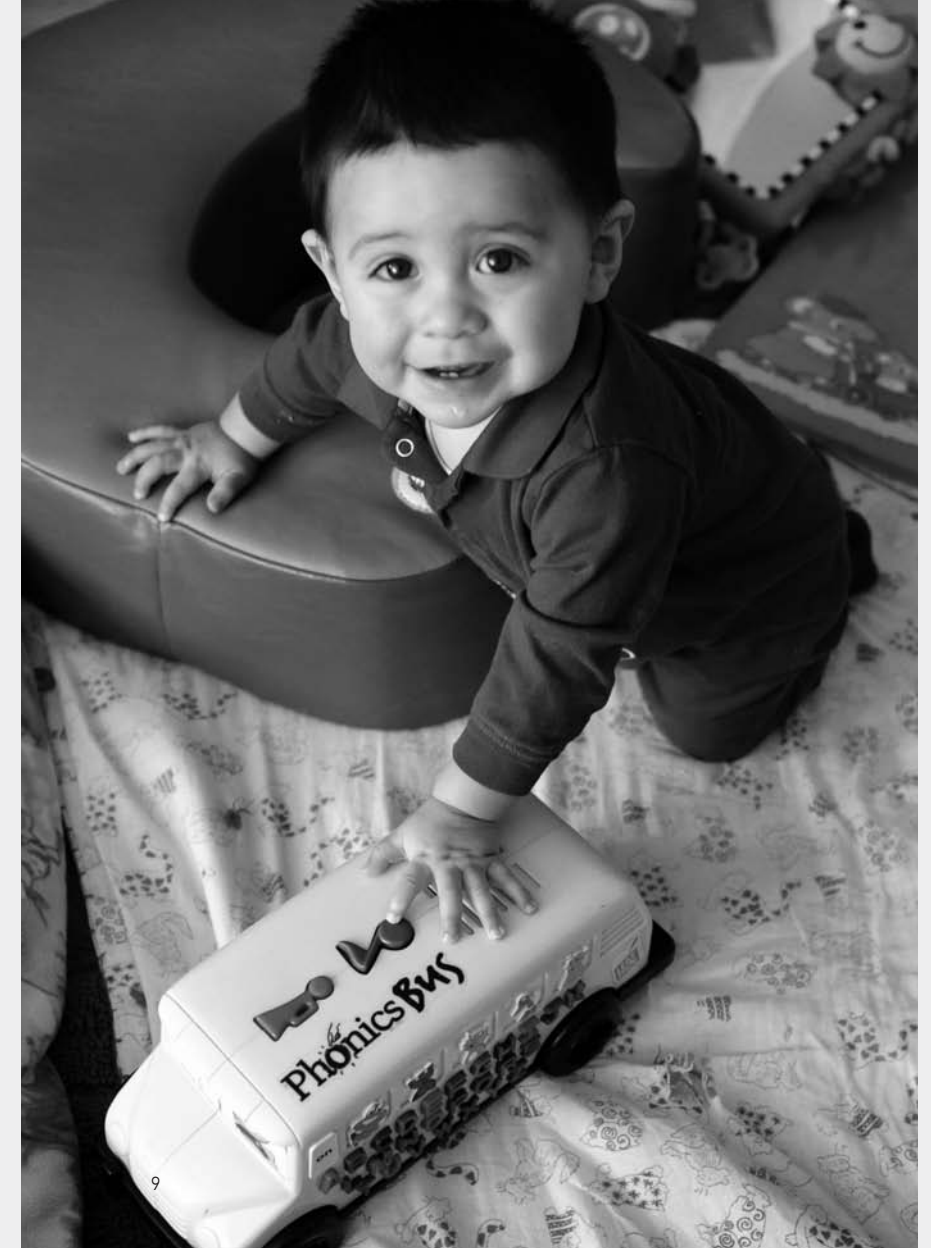
Alma's story is an example of how the Coalition helps people to reach their potential, while giving their children stability and a much greater chance for success.

## 25 YEARS OF **PROVIDING STABILITY FOR CHILDREN**

Homelessness influences all aspects of a child's development – the stress of transition can impact academic performance and social competence. The Coalition's Renaissance Children's Center (RCC) provides a safe, stable environment for children to develop the skills necessary to succeed in school and with their peers.

At the Children's Center, teaching life skills is the number one priority. Highly trained staff members show children how to work well with others. They are given the tools for academic achievement and creative problem solving. Children of all income levels learn and play together, encouraging empathy and understanding amongst classmates from diverse economic backgrounds. Skills learned at RCC prevent future generations of homelessness while promoting long-term success.

RCC has earned the prestigious 4-star Qualistar rating and is accredited by the National Association for the Education of Young Children.



## 25 YEARS OF SERVING COLORADO

Since homelessness is not just an urban problem, the Colorado Coalition for the Homeless stretches its resources to maximize the impact of our programs across the state.

The Coalition provides leadership to the Colorado Community and Interagency Council on Homelessness, convened by Governor Bill Ritter in 2007.

The Coalition also directs Colorado's Homeless Prevention and Rapid Re-Housing Program in collaboration with 40 partner organizations. This coordinated, community-based strategy minimizes the costly duplication of services and leverages other local, community resources to help families and individuals maintain housing stability.

In addition, our Rural Initiatives program provides funding and technical assistance to 14 partner agencies ending homelessness in Colorado's small towns, farming communities and mountain resorts.



Reporters cover a press conference on National Health Care Reform at the Coalition's Stout Street Clinic.

## 25 YEARS OF INNOVATION

The Colorado Coalition for the Homeless is recognized as a national leader in the integration of housing, healthcare and support services to end homelessness.

In August, Speaker of the U.S. House of Representatives, Nancy Pelosi, joined by Colorado Representatives Diana DeGette and Jared Polis, convened a press conference at our Stout Street Clinic to highlight the need for healthcare programs for the homeless. Speaker Pelosi said, "This facility is a perfect model for the nation on how to get the job done. It's of national significance..."

**"of national significance"**

*The U.S. Department of Housing and Urban Development (HUD) recently named Denver a model city for our efficient approach to finding lasting solutions for those experiencing homelessness.*

# 25 YEARS OF COMPASSIONATE CARE

In our 25 years of service to Colorado communities, one thing stands out: the compassion of our employees who serve homeless families and individuals during their most difficult moments.



**Matt Hire** met Debbie as she became homeless, fleeing from domestic abuse. Debbie is deaf and therefore faced unique obstacles in getting help. She came to the Coalition seeking safety but struggled to communicate the complexity of her situation. Matt Hire took the time to understand her needs; he strived to become familiar with her disability and learned sign language. Keenly aware of the factors that contributed to her homelessness, Matt was determined to keep Debbie safe until he could get stable housing for her. Debbie is now in her new home, secure and free from a life of abuse.

Matt went above and beyond to provide the highest level of service for a woman with special needs. His compassion, caring, and commitment to inclusiveness demonstrates our philosophy of service at the Coalition.



**Maria Lucero** was assigned as the case manager for Pamela, a single Grandmother who was suddenly faced with raising eight children. Unable to afford housing that could accommodate her family and terrified about the near reality of ending up on the streets, Pamela came to the Coalition seeking help. She was astounded by Maria's compassion. "Maria said, "Pamela, I am a Grandma too. I am going to make sure that we find safe housing for you and the kids."

Pamela openly expresses her gratitude for Maria's kindness and the Coalition's services, "Maria has been with me through thick and thin. We owe everything we have to Maria and the Coalition."

## PROGRAMS

- Benefits Acquisition & Retention Team (BART)
- Community Resources
- Denver Street Outreach Collaborative
- Housing First
- Education & Advocacy
- Employment & Vocational Services
- Family Support Services
- Stout Street Clinic – Health Care Services
- Homeless Prevention & Rapid Re-Housing
- Mental Health Services
- Program Evaluation & Quality Assurance
- Renaissance Children's Center
- Rental Assistance Program
- Rural Initiatives
- Substance Treatment Services
- Supportive Housing Programs/Developments/Communities
  - Beacon Place
  - Forest Manor Apartments
  - Forum Apartments
  - Gateway Supportive Housing
  - Renaissance 88 Apartments
  - Renaissance at Blue Spruce
  - Renaissance at Civic Center
  - Renaissance at Concord Plaza
  - Renaissance at Loretto Heights
  - Renaissance at Lowry Boulevard
  - Renaissance Off-Broadway Lofts
  - Renaissance Riverfront Lofts
  - Renaissance at Xenia Village
  - Ruth Goebel House



Governor and Mrs. Ritter help break ground at the Coalition's Renaissance Uptown Lofts.

Photo: Jordan Loyd

## LEADERSHIP TEAM

- |                           |  |
|---------------------------|--|
| <b>John Parvensky</b>     | President & CEO  |
| <b>Louise O. Boris</b>    | Vice President of Programs                               |
| <b>Stanley Eilert</b>     | Vice President of Operations                             |
| <b>Elizabeth Cookson</b>  | Director of Psychiatry                                   |
| <b>Tye Deines</b>         | Director of Human Resources                              |
| <b>Mary Lea Forington</b> | Director of Health Services                              |
| <b>James Ginsburg</b>     | Director of Substance Treatment Services & Housing First |
| <b>Bette Iacino</b>       | Director of Education & Advocacy                         |
| <b>David Klimut</b>       | Director of Housing Development                          |
| <b>Michelle Lapidow</b>   | Director of Mental Health Services                       |
| <b>Terri Little</b>       | Executive Assistant                                      |
| <b>Tim Marshall</b>       | Director of Residential & Vocational Services            |
| <b>Mark Miller</b>        | Director of Rental Assistance                            |
| <b>Jennifer Perlman</b>   | Director of Outreach & Community Resources               |
| <b>Susie Street</b>       | Director of Family Support Services                      |
| <b>Scott Strong</b>       | Director of Program Evaluation & Quality Assurance       |
| <b>Jerry Valdes</b>       | Director of Property Operations                          |
| <b>Roz Wheeler-Bell</b>   | Director of Homeless Prevention & Rapid Re-Housing       |
| <b>Jennifer N. Wilson</b> | Director of Resource Development & Marketing             |
| <b>Judith Wilson</b>      | Medical Director   |

# CREATING

1984

Colorado Coalition for the Homeless established as a 501(c)(3) nonprofit

1985

The Coalition opens Stout Street Clinic to provide medical care to the homeless  
John Parvensky appointed Executive Director

1986

Comic Relief performs in Denver to benefit the Coalition  
The Coalition hosts the first annual Statewide Conference on Homelessness

1987

Congress passes the Stewart B. McKinney Homeless Assistance Act, the first federal statutory response to homelessness

1988

Ruth Goebel House opens for homeless women with disabilities

1989

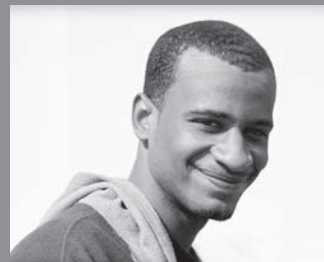
Colorado creates the Tax Check-off Fund to End Homelessness, raising \$245,000 in its first year

1990

Forest Manor opens with 84 apartments and supportive services

1991

Coalition establishes Metro Denver Homeless Families Program, one of nine national demonstration programs funded by HUD and the Robert Wood Johnson Foundation and first regional effort to end homelessness for families



1992

The Coalition begins offering mental health care

1993

Governor Roy Romer signs a resolution declaring HOPE Week (Homeless Organizations for Public Education), a campaign initiated by the Coalition

Quigg Newton Family Health Center opens in partnership with Denver Health and the Denver Housing Authority



1995

The Coalition expands its reach through the Rural Initiatives Program  
Xenia Manor opens with 51 apartments and supportive services

The Coalition establishes the Bridges Program for homeless individuals with severe and persistent mental illness in collaboration with the Mental Health Center of Denver

1996

The Coalition redevelops The Forum as the first permanent, supportive housing program for homeless men and women in downtown Denver



1997

The Coalition constructs Renaissance at Loretto Heights for homeless families

1998

Renaissance at Concord Plaza opens for homeless families

1999

Renaissance Children's Center opens, providing high quality early childhood education

Beacon Place opens an 85-bed transitional housing facility for homeless adults

The all-volunteer Eye Clinic opens, offering eye exams and prescription glasses at the Stout Street Clinic

2000

The Coalition begins to help rural service providers compete for federal homeless assistance grants



2001

The Open Door Addiction Treatment Program for homeless adults begins

2002

The Coalition develops Renaissance Off Broadway Lofts as the first affordable rental loft development in Denver

The Health Outreach Program's (HOP) mobile medical clinic begins delivering health care to adults and children at foodbanks, motels and shelters

The Coalition redevelops Renaissance Blue Spruce Townhomes at Lowry for homeless families

The Ford Foundation recognizes Coalition President John Parvensky with its prestigious Leadership for a Changing World Award

Comedian Robin Williams helps the homeless with a benefit performance for the Coalition

2003

The Coalition constructs Renaissance at Lowry Boulevard Apartments for homeless and working families

The Coalition creates the Denver Housing First Collaborative, a program proven to save tax payer dollars and end chronic homelessness



2004

The Coalition's Dental Clinic opens to provide oral care for the homeless

Renaissance at Civic Center Apartments opens, preserving Denver's historic YMCA as affordable, supportive housing

2005

The Coalition commemorates its 20th anniversary having developed 1,000 units of housing with supportive services; Stout Street Clinic serves 8,500 patients

Denver adopts its 10 year plan to end homelessness known as Denver's Road Home

The Coalition develops the 16th Street Housing First Program and the Denver Street Outreach Collaborative in collaboration with the City of Denver

2006

The Coalition plays a significant role in restoring \$1 million in state funding for mental health, drug and alcohol abuse services

2007

Governor Bill Ritter establishes the Colorado Community and Interagency Council on Homelessness with Coalition President John Parvensky serving as Vice Chairman

The Coalition redevelops Renaissance 88 for homeless and working families in Thornton

Gateway opens to provide immediate shelter for clients preparing to enter other programs

2008

The Coalition helps pass the National Housing Trust Fund legislation, the country's first dedicated source of revenue for affordable housing, signed into law by President George W. Bush

2009

The Coalition leads the campaign that saves the Aid to the Needy Disabled Program (AND) from state budget cuts  
Speaker of the U.S. House of Representatives, Nancy Pelosi, visits the Stout Street Clinic and cites it as a "national model"

Renaissance Uptown Lofts site construction begins

The Coalition announces its new Homeless Veterans Housing Fund

Renaissance Riverfront Lofts opens and is recognized as the "Best Green Affordable Housing Development" by Affordable Housing Finance Magazine





# 25 YEARS OF DEMONSTRATING LEADERSHIP

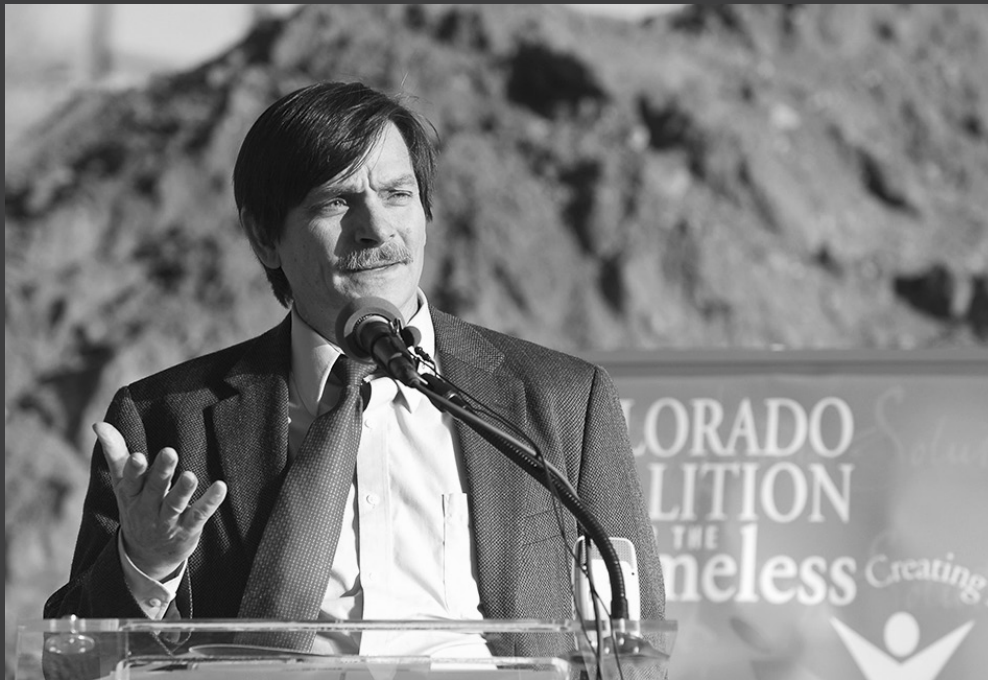


Photo: Jordan Loyd

For twenty-five years the Colorado Coalition for the Homeless has cultivated a strong voice for national, state and local public policies to end homelessness. The need for our advocacy has never been more critical. American families are struggling in more ways and at greater rates than at any time in our recent history.

The Coalition's leadership extends from our early days in 1987, working on the McKinney Homeless Assistance Act, to the 2009 election of John Parvensky as Board President of the National Coalition for the Homeless. We also worked closely with the National Healthcare for the Homeless Council, the U.S. Department of Housing and Urban Development and the U.S. Interagency Council on Homelessness to shape a new federal response called the Homeless Prevention and Rapid Re-Housing Program, passed by Congress in 2009.

What began as a grassroots advocacy effort has grown into a comprehensive, statewide solution to homelessness, and a model for the nation.

# 25 YEARS OF COMMUNITY

## Colorado Coalition for the Homeless Board of Directors

Jay Brown, Chair  
James B. Winston, Vice Chair  
Peter Calamari, Treasurer  
Eileen Pappas, Secretary  
Steve Bassett  
Beatriz Bonnet  
Kim Griggy  
Daniel Grossman  
James W. Hubbell  
Randle Loeb  
Karen S. Lowe  
Rebecca Martinez  
T.R. Reid  
Tom Rossi  
Thomas W. Snyder



The Colorado Coalition for the Homeless is governed by community leaders with proven strengths in fiscal management, real estate development, health care, business, legal, resource development, community development, and advocacy. The Board includes consumers of the Coalition's services who represent the diversity of those we serve. (Not all board members pictured.)



Photos: Jordan Loyd



## Home for the Holidays

The community came out in support of the Coalition's first annual Home for the Holiday's 5K and 1K Family Fun Run.

## Volunteers

Corporations, groups and individuals make up our terrific team of volunteers. Seven hundred volunteers provided medical services, painted rooms, planted trees, formed fundraising committees, and worked events.

Visit the Annual Report page at [www.coloradocoalition.org](http://www.coloradocoalition.org) to learn about one child's campaign to help the Coalition.

## Resource Development & Marketing Committee

Karen S. Lowe, Chair  
Chris Cahill  
Jaclyn Casey  
James Davis  
Jeremy Hotsenpiller  
Laura Manthey  
Joel Neckers  
Jynx Sanders

## Program Committee

T.R. Reid, Chair  
Jay Brown  
Judy E. Glazner  
Kim Griggy  
Daniel Grossman  
Randle Loeb  
Rebecca Martinez  
Eileen Pappas  
James B. Winston

## Renaissance Housing Development Board of Directors

John Parvensky, Chair  
David Klimut  
Steve Bassett  
James W. Hubbell  
James Lewis  
Randle Loeb  
John Pappas  
Alan Robinson  
Sandra Sauer  
James B. Winston



## Consumer Advisory Board

Rev. Tom Rossi, Chair  
Lexi Udell  
Steve Shankland  
Randy Brown  
Randle Loeb  
Justino Silva  
Patrick Vogt  
Tommy Jones  
David G. Mason  
Miguel Camacho  
Calvin McAfee

# THANK YOU FOR 25 YEARS OF SUPPORT

## Organization Donors

30h13  
4Charity Foundation  
A and M Enterprises  
Alain Dalmau Architects  
Alan Duncan Roofing Company  
Alliance Construction Solutions  
America's Charities  
Anschutz Foundation  
Anthem Blue Cross & Blue Shield  
Arapahoe High School Drama Club  
ARC Thrift Stores  
ARI Construction  
Arvada Coalition for Change  
Ascentia Partners, LLC  
The Denver Foundation  
Backflip Studios  
Ball Corporation  
Bank of the West  
Benet Hill Monastery  
Beta Health Association, Inc  
BikeDenver  
Temple Hoynes Buell Foundation  
The Campbell Foundation Fund  
Capital Area United Way  
Capitol Heights Presbyterian Church  
Carpet Studio  
CB Richard Ellis  
Ccfm, Inc.  
Central Christian Church  
CH2M Hill, Inc.  
The Laurence and Michele Chang Foundation  
Charlotte C. Thomas Revocable Trust  
Cherry Creek Mortgage  
Church of Jesus Christ - Longmont  
Citi Global Impact Funding Trust, Inc.  
City and County of Denver  
City of Thornton  
Coalfire Systems, Inc.  
CoBank  
Colorado Association of Realtors  
Colorado Business Bank  
The Colorado Health Foundation

Colorado Housing & Finance Authority  
Colorado Institute of Massage Therapy  
Colorado Nurses Association  
The Colorado Trust  
Comcast  
Comcast Foundation  
Comcast One, LLC  
Community First Foundation  
Community Shares  
Concord Contract Furniture Services  
The Consortium for Older Adult Wellness  
COPIC Medical Foundation  
Daniels Fund  
The Decatur Group  
Delta Dental  
The Denver Foundation  
Denver Post Season to Share, a fund of the  
McCormick Tribute Foundation  
Denver School of Science and Technology  
Douglas County School District  
eBay Foundation Matching Gift Program  
ECA Foundation, Inc.  
EnCana Oil & Gas (USA), Inc.  
Enterprise Community Partners  
Episcopal Peace Fellowship, Colorado Chapter  
The Jeanette Eppler Charitable Trust  
ExxonMobil Foundation  
Faegre & Benson Foundation  
Falkenberg Foundation  
FCI Constructors, Inc.  
Fidelity Charitable Gift Fund  
First Unitarian Society of Denver  
FootHills United Way  
Franciscan Friars of Holy Name Province  
May Bonfils Stanton Memorial Trust  
Girl Scout Troop No. 2811  
Give With Liberty  
GoodSearch  
Great American Insurance Company  
Greater Horizons  
Great-West Life & Annuity Insurance Co.  
Halverstadt Foundation  
Alice Suzanne Hamilton Trust

Harmes C. Fishback Foundation Trust  
Heartland Charitable Trust  
Highland Park Presbyterian Church  
Hill Foundation  
Humphreys Foundation  
Hyder Construction, Inc.  
I Do Foundation  
International Facility Management Association  
ING  
J.L. Davis Financial Corp.  
Jewish Community Foundation of Colorado  
JJP Companies  
Johns Manville Corporation  
Helen K. & Arthur E. Johnson Foundation  
JPMorgan Chase  
JUSTGIVE  
Kaiser Permanente Health Plan of Colorado  
Kemmer Family Foundation  
Kent Denver School  
Polsinelli Shughart, PC  
The Power Foundation  
Pyramid Group, Inc.  
Lake Middle School  
LexisNexis  
Life Restorations, LLC  
LifeLineMobile  
Lifespan Technology Recycling  
Littleton Public Schools  
Lower Downtown Neighborhood Association  
The Lowery Foundation  
The MacCourt Fund  
Macy's West G.I.F.T.  
Margenau Associates, Inc.  
McCormick Tribune Foundation  
McGraw-Hill Companies  
McKesson Foundation, Inc.  
Merchants Office Furniture  
Microsoft Matching Gifts Program  
Mighty Karma, LLC  
Mile High United Way  
Mishler Construction  
MotivAction  
Mountain States Employers Council

Mulhern Mre, Inc.  
National Philanthropic Trust  
Network for Good  
The Nord Family Foundation  
Office of Legislative Legal Services  
Oppenheimer Funds  
William B. O'Rourke Foundation  
The Law Office of O'Toole & Sbarbaro, PC  
Paragon Theatre, Inc.  
Paula L. Jensen Family Trust  
Penford Products Co.  
Penny Harvest  
Pepsico Foundation  
Personal Assistance Services of Colorado  
Pikes Peak United Way  
The Piton Foundation  
Jay and Rose Phillips Family Foundation  
Platte River Ventures  
Pleasant Hill School  
Polsinelli Shughart, PC  
The Power Foundation  
Pyramid Group, Inc.  
Quadriga Partners  
Questar  
Regis University  
Reuters America, Inc.  
Rock Ridge Elementary  
Michael and Madeline Rohan Foundation  
Rose Community Foundation  
Rothgerber, Johnson & Lyons, LLP  
Rowan Community  
S & R Environmental Consulting, Inc.  
Safeco Insurance Cares Campaign  
Safety and Construction Supply, Inc.  
Saint Andrew's Episcopal Church  
SAL Squadron  
Sand and Sage Motel  
Schlessman Family Foundation  
Schwab Charitable Fund  
Shell New Professional Network  
Sooper Credit Union  
Source Office Products  
Spondulinx, LLC

St. Andrew's Church  
St. Gabriel Catholic Church  
St. Mary Land & Exploration Co.  
St. Thomas Aquinas University Parish  
Stapleton MCA  
Statewide Wholesale, Inc.  
William B. O'Rourke Foundation  
Stoel Rives, LLP  
TelecomPioneers  
Telecrafter Services, LLC  
Teletrends  
TIJ Companies, Inc  
Total Plumbing  
United Natural Foods, Inc  
United Way of Central Indiana  
United Way of Central Maryland  
United Way Of Greater Richmond & Petersburg  
United Way of Larimer County  
United Way of Southeastern Pennsylvania  
United Way of the Bluegrass  
United Way of Tri-State  
US Bank  
Valley of the Sun United Way  
Visa GivingStation  
The Lloyd David and Carlye Cannon Wattis Foundation  
Wellpoint Foundation  
Wells Fargo  
Western Union Foundation  
Wheeler Trigg O'Donnell Foundation  
Gary Williams Oil Producer Employee Fund  
Willis HRH  
Windy Ridge Enterprises, LLC  
Wiz-Quiz Arvada  
Xcel Energy Foundation  
Young Denver Finance Professionals  
Zell Family Foundation

## \$10,000 +

John M. and Sheila H. Allen  
Beatriz Bonnet  
Craig and Marcia Cohen  
Donald and Patricia Cook  
Susan Hagedorn  
Leif Houkom  
Matthew M. and Kimberly S. Langston  
Christopher B. Min and Amy E. Fischer  
William and Rita Neff  
Gerald J. and Joan D. Starika  
Malcolm and Hermine Tarkanian  
Dan R. and Betty N. Taylor

## \$5,000 - \$9,999

Jay Brown and Allison Lee  
Bradley Busse  
David and Tracie Castanon  
Catherine P. Cole  
Marilyn R. Collister  
James C. and Karen E. Crain  
Richard and Ze Deane  
Thomas K. Gaumer  
Jeni A. Halingsstad and Andrew H. Swanson  
Douglas and Kerry Harris  
Martin B. and Carol J. Hidalgo  
James W. Hubbell  
Raymond M. Huff  
Margaret L. Lukas  
John A. and Lynn E. Raber  
Walter and Susan Rakowich  
Marion L. Tobin  
Larry and Ginger Underwood

## \$2,500 - \$4,999

Mike Bogus  
B. Lawrence and Joan S. Brennan  
John R. and Cynthia A. Chase  
John P. and Jo Ann G. Congdon  
Sean Connelly  
Stephen Cumella and Cindy Carothers  
Michael L. and Francine J. Fisher  
Jamie Gard  
Matthew and Livie Grogan  
Christopher Herndon  
Gregory and Patricia Hueni  
Thomas M. and Megan M. Kelly

Thomas and Barbara Kraujalis  
Zachary Leavitt  
Patricia and Ted Ludlam  
Nancy L. Martin  
Wyoma Mercer  
Jeanne Mitisek  
Michael Murphy  
Leif Houkom  
Kenneth R. and Juli R. Parrott  
John Parvensky and Tenley Stillwell  
Perry C. Peine  
Dale and Linda Petkash  
Sara Peyton and Richard Bottjer  
Milam Pharo  
T.R. Reid and Margaret McMahon  
Michael and Madeline Rohan  
Ethel E. Rollins  
Joel Shebowich and Lynne Stempien  
Loren and Deborah Snyder  
Alvin L. Walters  
Robert and Suzanne Wright

## \$1,000 - \$2,499

Joseph and Nona Ahearn  
Ann Marie Bartlett  
Steve and Jennifer Bassett  
Robert and Mary Bearman  
Cindy Beeks  
Cathy Beyer  
John R. Stamper and Vina Sue Bishop  
Wanda J. Blanchett  
Tom J. and Doris E. Blyth  
Twyla Boe  
Barry and Lorna Bounds  
Barbara and John Brant  
Thomas J. and Mary F. Brook  
Brenda Brown  
Everett W. and Carolyn L. Brown  
Stanley R. and Marilyn M. Brown  
Melissa Brownstein  
Donald H. and Juanita A. Burkhardt  
Glen E. and Janet K. Burmeister  
Jentry Byleveld  
Eileen M. Byrne  
Peter and Cristen Calamari  
Elizabeth Capdevila  
Toan and Christina Chau  
Joseph P. and Jana L. Clark  
Robert J. and Kathleen A. Clark  
Cindy W. Clover and May C. Clark  
Allan Cohen  
Lewis Colgan and Ann Sullivan  
Robert F. and Nancy L. Connor  
Elizabeth Cookson  
Raymond P. Costello  
Jeffrey J. and Katherine E. Crawford  
George B. and Marion G. Curtis  
Donald Davenport  
John B. Davis, Jr.  
Katharine Bard Dickson  
Phil W. and Lisa G. Ensign  
Randall and Beth Ferguson  
Eugene Fischer  
Andrew W. and Jennifer A. Fitzpatrick  
George B. and Jeri L. Flynn  
Robert C. and Darcy D. Folzenlogen  
William and Fairy Gage  
David L. and Laurie E. Gaspar  
Alvin D. Giargiari  
Penn and Marilyn Gildersleeve  
David M. Gillilan  
Lezlie Goldberg  
Elizabeth Grinevics  
Robert A. and Jean M. Gryzmala  
Gregory R. Hagan  
Pamela E. Haglund  
James Halpenny  
Carol Hampf and Peter Kloefer  
Karen Harrington and Lou Wilcox  
Edward P. Havranek and Janis L. Johnson  
Andrew Loizeaux and Lynn Hawthorne  
Darice M. Henritze  
Elaine Enarson  
John E. Hill, Jr.  
Michael and Deanna Hines  
Chevis F. Horne  
Jeremy A. Hotsenpiller  
Jackie L. Jacoby  
Joel B. Javer  
R. William and Patricia A. Johnston  
Mildred M. Kasten  
Gregory P. and Sherlyn M. Keiling  
David and Gladys Kohler  
Barry E. and Linda A. Koritz  
Donna C. Kornfeld  
Jason Kuehn  
Steven and Sharon Laas  
Lisa M. Latts  
Michael D. Lawrence

Brad Leach  
Bernard and Lory Levinger  
Nancy E. Livingston  
Paul D. Lombardi  
Karen S. Lowe and Jim A. Lattanzio  
Sarah D. Lynch  
Tim Macdonald and Jodi Blomberg  
Michael and Sandra Maloney  
David and Catherine Manchester  
Patrick Marek  
Andrew and Mary Ann Martin  
Patrick Marx  
Ross S. and Arline C. Marzolf  
Jeffrey and Kathy Mather  
Carter and Constance McClintock  
Donald O. and Carleen A. McIntyre  
Harry J. McKaig  
Stephen and Lisa McKean  
Guy M. and Kathy L. Mendt  
Michelle S. Miller  
Scot and Carolee Miller  
John D. Miranda  
Carrie Lamitie  
M. Robert and LeeAnn Morrill  
J. Stephen Mott and Melba A. Stofka-Mott  
John M. and Suzette A. Mullins  
Philippa Narog  
David Nemovitz and Amanda Tessar  
Warren R. and Pamela J. Neufeld  
Pamela L. Niemitalo  
William M. and Diane L. Ojile  
Edward I. Painz  
Gary Parham  
Michelle Parker  
Norman Parker  
Daniel K. and Susan A. Paulien  
Susan J. Phillips  
Val J. and Marcia T. Pietrasiewicz  
John and Barbara Plungy  
Donald H. Poeschel  
Sandy L. Potter  
David Powell  
Charlotte Pustek  
Susan A. Putland  
D. G. and Patricia A. Reese  
Gerald J. and Frances C. Reichardt  
William W. and Beth A. Reid  
Rob and Barb Reilly  
H. H. and Carol A. Reitmeyer  
Brent and Ann Reschak

Andrew and Karen Ritz  
Mark Roeder  
Ted L. Roorda  
Barry Rosenberg and Lee Fisher-Rosenberg  
Evan J. and Grace P. Roth  
Nedra Rose San Filippo  
Bruce W. and Martha E. Sattler  
Mary Ellen Scanlan and George F. Blankenship  
Kirk Scheitler  
Carol J. Schmidt  
Robert D. and Kimberly J. Schork  
Wagner and Annalee Schorr  
Gary J. and Gloria A. Seib  
Jeremy and Susan Shamos  
Bob Shannon and Yafa Napadensky  
Eileen M. Sharkey  
Jennifer R. Smith  
R. R. and Anne Snyder  
Thomas Snyder and Lisa Scalpone  
Jerome F. and Julie A. Sobetski  
Charles and Roberta Speltz  
Hannah Sperber  
Stewart Squires  
Phil and Helen Steen  
Andrew and Carolyn Steffi  
John E. and Dorothy M. Stein  
Ann Sullivan  
Claire G. Taber

Beatrice Taplin  
Jim and Kate Taucher  
S. Lee and Kathryn Terry  
James Tomonto  
Richard and Janette Verhey  
Bernd and Emily Vilkus  
Laura A. Wade  
Lisa Wagner  
Robert M. Walker  
Douglas Warnecke  
Larned A. Waterman  
Lisa Weil and Steve Zansberg  
Gari Westkott  
Barbara A. Wetzel  
Stephen White and Rose Kauffman  
Thomas W. Williams  
Jennifer N. Wilson  
James B. and Judy J. Winston  
Alberta Ziomiek Wolf  
John H. Wolfe  
Nancy J. Woodward  
Frank and Deb Wright  
Matthew M. Wright  
James R. and Janice K. Zapapas  
Claire Zilber  
Carle Zimmerman and Rita Derjue  
Mary E. Zinn



**\$500 - \$999**

James Albin  
 Richard W. and Doris J. Allard  
 Brett and Danette Anderson  
 Gerald L. and Carolyn A. Anderson  
 John D. Andrews and Anne L. MacRae  
 Elizabeth L. Aronsen  
 Donald L. and Cynthia J. Avis  
 Brian S. and Laura A. Bacak  
 Richard D. Bauman  
 John and Mary Bayard  
 Richard W. Belt  
 Kim and Michael Benage  
 Harold Berenson and Laura Ackerman  
 Edwin J. and Kathleen M. Bernau  
 Daryl R. and Marilyn B. Bivens  
 Gerald L. and Ramona J. Bleser  
 Arthur G. and Nancy J. Blomberg  
 Debra A. Bogar  
 Lee A. Bollacker  
 Lawrence and Louise O. Boris  
 Fred P. Bramhall and Mary A. Clark  
 Larry and Peggy Bridge  
 Joseph J. Bronesky and Jacquelin A. Medina  
 Peter L. Brophy  
 Robert J. Brown, Sr.  
 Winifred H. Brown  
 Grace M. Buckley  
 Kenneth G. and Bernice D. Bueche  
 Bud and Kristi Bullard  
 Jerry and Jennifer Burke  
 Keith S. and Lindsay R. Campbell  
 Therese Carpio  
 Paul J. Carroll  
 Sukwoo Chang  
 Ralph S. Chapman and Althea L. Chapman  
 Wilton W. and Michele S. Cogswell  
 Adam Cohen  
 Thomas E. Congdon  
 Andrew and Kathleen Conneen  
 Robert D. Coombe  
 George F. and Mildred W. Coughlin  
 Ronald R. and Phyllis B. Covey  
 Donald G. and Heide P. Crino  
 David and Helen Damouth  
 William T. Dawson  
 Margaret B. Deitrich  
 Jennifer C. Dethmers  
 Alan and Linda Dewey

Cynthia Diblik  
 Albert G. Dietz  
 Thomas and Leslie Doherty  
 William M. Dudley  
 Deborah A. Duemling  
 Albert Eckhardt  
 John E. Elgin  
 George Epp and Kenda Peterson  
 Ernest F. Fazekas and Susan R. Mullen  
 Roger H. Fesmir  
 Betty L. Fields  
 Richard A. Fieman  
 Michael Filkoski  
 Mark Fitzgerald and Karen Jenni  
 Larry and Gilda Flier  
 Hal L. and Jan L. Fontinelle  
 Joyce E. Frakes  
 Jennifer Garrett  
 Lance Gattrell  
 John C. Geyer  
 David E. Gingerich  
 Timothy A. Gognat  
 Jerry and Carole Gossner  
 Stephen P. and Cheryl A. Gottula  
 Brian A. Gregg  
 Alice S. Grey  
 Even Griffiths  
 Lyle L. and Janet M. Grimmett  
 Daniel Grossman and Robin Koenigsberg  
 Robert K. Gruber  
 John W. Grudis  
 Sasha M. Gubser and Brian P. Kurzel  
 James and Laura Hahn  
 Bruce and Mary Jane Hall  
 Michael S. and Keana K. Hall  
 William K. and Pamela A. Hartman  
 Hugh E. and Michelle M. Harvey  
 Russell K. and Susan E. Haskell  
 Edwin A. Haugland  
 Gary A. and Vera L. Hayes  
 Virginia B. Heddens  
 Stephen P. and Angela S. Hellebush  
 Virginia Hersch  
 Douglas E. and Janet M. Hodous  
 Shawn E. and Evon S. Holladay  
 Graham E. and Catherine P. Hollis  
 Kirk and Carolee Hornbuckle  
 Douglas and Debra Hoskinson  
 Mark I. and Joan P. House  
 Margaret T. Howe

Cristine J. Hulse  
 Jon and Patricia Hutchens  
 Stuart Hutchens  
 Ernie and Alice Jablonski  
 James G. Jaeckel  
 Daniel Jamieson and Jennie Rabinowitz  
 Marcella Jarema  
 Dale R. Jensen  
 Anita M. Johnson  
 Stephen J. and Wendy W. Kaeuper  
 David Kalish  
 Joanne Norris  
 James and Carolyn O'Donnell  
 Paul J. Olson  
 John and Eileen Pappas  
 Barry Keene  
 Ann Marie Kennedy and Steve Miller  
 Jacqueline L. Kennedy  
 Jane A. Kennedy  
 Ron and Jill Kenney  
 Diane M. Poulter  
 Charles Randall  
 David Klimut and Beth Madigan  
 Karolyn Knauber  
 Gregory and Lauri Krysl  
 Danny Daigle and Sandra Lane-Daigle  
 Fredrick Larke  
 Dawn Leaman  
 Joel and Frieda Levine  
 Timothy Lodico  
 Jean B. Lones  
 Jan Lonsdale  
 Susan E. MacLean  
 Charles L. Malott  
 Amy Martin  
 Kirk M. Mason  
 Cormack McCarthy  
 Jose and Carla Salazar  
 Barbara Salomon  
 Paul J. and Rita K. Saunders  
 Marshall Schechter  
 George R. and Alice Marie Schottler  
 Jen Schwem and John Ekeberg  
 John H. and Aline C. Schwob  
 Verona Scott  
 Rosemary Margaret Shearer  
 Robert D. Shedd  
 Marston C. and Theresa D. Shelton  
 Kip Shuman  
 Wen Shyong Su and Shu Tze Su  
 M. W. Slezak and D. M. Wilken  
 Stephen A. and Marsha J. Smith  
 John A. and Dona C. Snader

**\$100 - \$499**

J. M. and Bonnie L. Abell  
 Rebecca K. Adix  
 Christine T. Agosta  
 Angela G. Brega  
 Irene Aguilar  
 Michael J. and Kuang-Yi Ahrens  
 Virginia P. Ainsworth  
 Patsy Allan  
 Earl H. Allard  
 David Allen  
 Eileen and Joseph Talty  
 Christopher Taravella and Kathleen Kerrigan-Taravella  
 Kay Tennant  
 Fritz and Jane Trask  
 Karen Truesdell  
 Mark Poetzl  
 Diane M. Poulter  
 Charles Randall  
 David Klimut and Beth Madigan  
 Cheryl A. Walker  
 Christine Washington  
 Edna S. Webster  
 James E. and Pamela A. Werner  
 Dennis and Pamela White  
 Timothy Williams  
 Charles K. and May G. Wilson  
 Robert Womersley  
 James Woods and Christine Woods-DeRael  
 Joe Woodward  
 Jody Wright



Tim Baldwin  
 William E. and Joan M. Ball  
 John G. and Nancy B. Banker  
 Louis and Pamela Bansbach  
 Mike and Marcia Barbalacci  
 Nancy J. Barger and Linda K. Kirby  
 Rosemary S. Baring  
 Donald C. Barnes  
 Mitzi R. Barnes  
 Robert H. and M. A. Barnstable  
 John H. and Cathy E. Bartle  
 Chris Bartle  
 Harisha J. Bastiampillai  
 Sara R. Alt  
 James Amling  
 Fradene M. Andersen  
 Charles and Cynthia Anderson  
 Ann K. Andrew  
 Dennis T. Anipen and Kathryn M. Di Giacomo  
 Julie Ansell  
 Duane D. and Renee L. Aragon  
 Bob Ardalan and Leah Crews  
 John R. and Bertha A. Armour  
 Diana M. Bennett  
 Lorraine Arnold and David Kuester  
 Charles R. Aschwanden  
 Thomas Ashbaugh  
 Sarah Louise Ashford  
 Theresa A. Atkins  
 Duane M. and Peggy E. Baack  
 Julius Baldovic and Annamaria Hrabinska  
 Minnie M. Baldwin

Michael K. and Kimberly L. Cavanagh  
 Joseph A. and Tiana S. Cesare  
 Bruce O. and Martha G. Chalker  
 Albert S. and Judith O. Challenger  
 Harold L. and Vicki P. Chapel  
 Steven and Nancy Charbonneau  
 Steve Charbonneau  
 Mardi Chase  
 Thomas M. and Ann M. Christensen  
 Theresa K. Churchill  
 Frances Ciliberti  
 Henry N. and Janet S. Claman  
 Barbra Clark  
 Kathryn Clark  
 Patricia Clark  
 Thomas G. and Margaret A. Claspell  
 Angela Clayton  
 Mike Clem  
 Paul and Joan Cloyd  
 Susan Coit  
 Charles V. and Carron L. Collins  
 Stephen and Diane Collins  
 Vicky Collins  
 Tina Colvin  
 Janet H. Coneys  
 Agnes A. Conley  
 Keith and Kelsey Connaghan  
 Thomas Connell  
 Christopher T. Connelly  
 Peter M. and Amy C. Conrad  
 Elizabeth Cook  
 Ron and Mary Butz  
 Charlene Byers  
 Mary Ellen Caiati  
 Jennifer L. Caldwell and Adele D. Work  
 Hugh and Susan Calkins  
 Larry J. and Ethyll M. Call  
 Robert Eric Callahan  
 Sara Blake  
 Andrea Blaschke  
 Wendy Block and Stuart Ollanik  
 Gary D. and Roberta G. Bloom  
 Leah Blumenthal  
 Donald R. Bolduc  
 Kathleen Borchers  
 Jerome and Margaret Borison  
 David L. and Fara S. Born  
 Libby and Patricia Bortz  
 Paul I. and Judith A. Bortz  
 Barbara Boyce

Tamara Ann Brady  
 Margaret M. Brahm  
 Mary B. Brancio  
 Marc and Claudia Braunstein  
 Angela G. Brega  
 Coley Brenan  
 Edward and Marjorie Brentari  
 David Bressler  
 Fred F. Brewer  
 Carol Rose Briggs  
 Anne B. Brinkman  
 Rebecca A. Brinkman  
 Donese Brittingham  
 Peter and Lori Bronk  
 Darrell A. Brown  
 David R. Brown  
 Elliot L. Brown  
 J. Robert and Mildred Brown  
 Neal, Karis, Jeff and Kathy Brown  
 Robert and Kelly Brown  
 Vernon L. and Priscilla J. Brown  
 Wesley A. and Linda L. Brown  
 Susan Brugman  
 Robert F. Bruner and Mary M. Carr  
 Michael and Linda Bryan  
 Ruth A. Buechler  
 Marshall L. Buhl  
 John S. and Melinda S. Buleza  
 Steven C. and Patricia L. Berry  
 Larry T. Berryman  
 Robert M. and Lawanna L. Best  
 Francesco G. Beuf  
 John T. and S. C. Bevington  
 Mary Bidegaray and David Kim  
 William E. Bierbach  
 Janet M. Biggi  
 Gary Bird  
 Jinn Birkes and M. Vecchione  
 Sara Blake  
 Andrea Blaschke  
 Wendy Block and Stuart Ollanik  
 Gary D. and Roberta G. Bloom  
 Leah Blumenthal  
 Donald R. Bolduc  
 Kathleen Borchers  
 Jerome and Margaret Borison  
 David L. and Fara S. Born  
 Libby and Patricia Bortz  
 Paul I. and Judith A. Bortz  
 Barbara Boyce



Neil and Mary Goff  
Christina Gold  
George J. and Ann K. Golden  
Jon S. and Cynthia L. Goldman  
Sandra R. Goldman  
Barry Goldstein  
Loren E. and Deborah F. Goltz  
Leroy M. and Mary M. Gomez  
Laura Gonzales  
Melissa S. Gonzales  
Hile W. and Veronica M. Goodrich  
Mona S. Goodwin  
Ronald J. and Mary K. Goodwin  
Nicole K. Gorham  
L. R. and Silvia Gorski  
Thomas A. Gougeon and Donna A. Middlebrooks  
Helen Gowan  
Gene Graesser

Cameron and Deborah Graham  
Robert S. Graham  
Scott Graham  
Gertrude Grant  
David and Jennifer Grapko  
Jerry Dean Graves  
Patricia A. Green  
Menucha Greenberg  
Greg Greenwood  
Claire B. Gregory  
Bruce and Christy Griffith  
Kim Griggy  
Charles Grubb  
Mark D. Gruskin  
Thomas S. and Ruth E. Guins  
Steven R. and Elana P. Gunberg  
Stuart S. and Patricia A. Gunckel  
Dennis H. Gunther

Crystal Gutierrez  
Gina Guy  
Carol L. Guyot  
Frank and Karen Haas  
Beverly R. and Harold A. Haddon  
Frances L. Haeefe  
Scott and Heather Hagemann  
Gary Hagen  
Margaret R. Hagood  
Charles R. and Suzanne S. Haines  
Donald Haldi  
James and Joann Hall  
Joseph W. Halpern  
Simon and Elizabeth Hambridge  
M. Rebecca Hammond and Leo Keith  
Stephen E. and Zipporah P. Hammond  
Russell S. Hampton  
Mark Stephen Hanchey  
Elizabeth A. Hancock and Steve C. Sumler  
Jean Hancock  
Pamela Hanes  
James Hankins  
Marcia Hannum  
Lowell H. and Jesse J. Hansen  
Eric J. and A. Allyn Harker  
Laura W. Harris  
Oletha L. Hart  
Robert and Joanne Hart  
Tom J. and Deborah J. Hart  
Esao and Rhonda Hashimoto  
Colby R. and Cathy E. Hatfield  
Stanley Haye and Jeanie Stillwell Haye  
Michael Hayes  
Carlyn M. Haze  
Richard W. Healy  
Tim M. and Laura M. Hearlihy  
Patricia Hecht  
George Heine, III and Janet Heine-Barnett  
Randal and Norma Heinz  
Joseph and Barbara Heit  
Ronald G. and Patricia A. Helfer  
Cynthia Helt  
Ralph and Margaret Henderson  
Sandra Henderson  
Fredrick and Betty Hendrickson  
Richard and Pam Hennessey  
L. Michael Henry  
Timothy M. Hepp  
John Herbert and Katherine Tamblyn  
David W. Herlinger

Donald H. and Genevie M. Hernor  
John Hewetson  
Bill and Laurie Hickenlooper  
Sigrid H. Higdon  
McArthur O. and Leila J. Hill  
Daniel C. Hillman  
Gary and Antonietta Hillsten  
Eric and Sarah Hilty  
Daniel Joslin and Marthann Hinson  
Robert and Jan Hirschfeld  
Charlotte Hirsh  
Donald and Mary Hoagland  
Fred H. Hobson  
Simon and Mary L. Hobson  
Wayne T. and Amy S. Hoffmann  
Bradley Jon Hoffner  
Roy P. and Patty A. Hoinville  
Christopher Holland  
Frieda K. and Richard A. Holley  
Wes Holmstrom  
Mike and Mary Beth Homiack  
Sheryl Hoot  
George Hoover  
Alan R. and Dorothy M. Hopeman  
Al Horan  
Julie Horan  
Louis J. Horkan  
Karla Horowitz and Barry Sharoff  
Justus and Estella Horstman  
Sandra Anne Horton  
Judith A. Howard  
Ann Hriso  
Denise L. Hryn  
Charles and Linda Huennekens  
Ann Huffman  
Frederick Hull  
K. R. and Julie M. Hunter  
Lydia Hunter  
Donald E. and Dee H. Huntington  
Gerald A. and Janet L. Hurst  
Donald L. Hurt  
BJ Iacino  
Sami Ibrahim  
S.K. Isaacson  
Sadako Iwamura  
Janis S. Jackson  
Thomas S. and Judith A. Jackson  
Nancy L. Jacobson  
Phyllis J. Jacques  
Honora I. Jacquez

Lorraine M. Jakubowski  
Bryan A. James  
Kenneth L. James  
William H. and Chris S. Jansen  
Richard J. and Susan A. Jaworowski  
Samantha K. Jenkins  
G. Victoria Jerome  
David R. and Karen R. Johnson  
Emmett M. and Jean H. Johnson  
Gail Johnson and Steve Saeger  
Joyce Johnson  
Lee H. and Jessica M. Johnson  
William and Marcia Johnson  
Paul K. Johnson  
Ronald Johnson  
Tamara Johnson  
Dale and Wilma Johnson  
Peg J. Johnston  
Vivian L. Johnston  
Audrey L. Jonas  
Ann Jones  
Deborah M. Jones  
Shaun Solomon and Diana Joy  
Damon Judd  
Joel Judd  
David and Jennifer Kahn  
Jeffery M. and Ilene S. Kahn  
Jessica L. Kahn  
Stephen S. and Linda S. Kalat  
Diana Kasson  
Phyllis E. Kauffman  
Janet Lammens  
Richard W. Kautt  
John L. and Angela M. Keane  
Catherine L. Keck  
Kevin M. Keenan and Mary J. Palmer  
Sally A. Keith  
Cornelia H. Kellogg  
Richard Kelly  
Thomas L. and Wendy A. Kelly  
John S. Kendall  
Kurt R. Kennedy  
Jim and Pam Kennel  
Robert M. and Nancy N. Kenyon  
Bernie C. Kern  
Mark E. and Marilyn S. Kessler  
Jonas and Thelma Kiken  
Michael Kiley  
Paul J. Kim and Tamara F. Goodlette  
James B. and Barbara K. Kimble  
Thomas and Patricia King

John and Barb Kinnear  
Richard J. and Phyllis L. Klein  
Deborah J. Knapp  
F. Walker Knight  
Susan Knight  
Curtis E. and Tonya K. Knudsen  
Delmar H. Knudson  
Walter A. and Gene N. Koelbel  
George A. Kohake  
Mary J. Kohl  
Patrick W. and Eleanor A. Kosmicki  
Bonnie Kossoff  
Carol J. Koth  
Owen B. and Mary L. Johnson  
Ronald Johnson  
Tamara Johnson  
Dale and Wilma Johnson  
Peg J. Johnston  
Vivian L. Johnston  
Audrey L. Jonas  
Ann Jones  
Deborah M. Jones  
Shaun Solomon and Diana Joy  
Damon Judd  
Joel Judd  
David and Jennifer Kahn  
Jeffery M. and Ilene S. Kahn  
Jessica L. Kahn  
Stephen S. and Linda S. Kalat  
Diana Kasson  
Phyllis E. Kauffman  
Janet Lammens  
Richard W. Kautt  
John L. and Angela M. Keane  
Catherine L. Keck  
Kevin M. Keenan and Mary J. Palmer  
Sally A. Keith  
Cornelia H. Kellogg  
Richard Kelly  
Thomas L. and Wendy A. Kelly  
John S. Kendall  
Kurt R. Kennedy  
Jim and Pam Kennel  
Robert M. and Nancy N. Kenyon  
Bernie C. Kern  
Mark E. and Marilyn S. Kessler  
Jonas and Thelma Kiken  
Michael Kiley  
Paul J. Kim and Tamara F. Goodlette  
James B. and Barbara K. Kimble  
Thomas and Patricia King

Esther B. Lee  
Nadine Lee  
Gladys W. Leher  
Stephen and Susan Lehman  
Sheila Lehrburger  
John M. and Patricia C. Leibman  
Paula R. Levin  
Scott L. and Laure G. Levin  
Alan and Leslie Levine  
Steven P. Levine  
Rocky J. and Pamela M. Levkulich  
Celeste Levokove  
Linda Levy and Bryan Baer  
Mark R. and Linda S. Lewis  
Sally Lewis  
Phil and Linda Lidov  
John and Nadine Lightburn  
Nancy Litwack-Strong and Peter Strong  
John E. and Karen I. Litz  
Jill Kester Locantore  
Colleen M. Locke  
Gregory L. and Jan M. Loeffler  
Eric Long  
Georgia L. Long  
John D. Longwell  
Lopez Kupper Family  
David A. Lucia  
Rustin and Susan Lucken  
Lucie D. Lusero  
David M. Maahs and Christine F. Walravens  
William and Mary MacIntyre  
David A. Mack  
David B. and Janet D. MacKenzie  
Marlene Maddalano  
Philip J. and Carlene H. Maher  
Hugh F. and Cristina H. Mahon  
Douglas Mandic  
Kathleen Mann  
William and Nancy Mann  
Charles B. Manning  
Laura Manthey  
Sam Markert  
Howard J. Markman  
Valerie Layer  
Vada Diane Marsh  
Lauren and Helen Martens  
Allan Marter  
Stephanie M. and Brett C. Martin  
Jeanne Martinez  
John A. and Barbara C. Martinez

Rebecca Martinez and John Hollander  
Vince and Theresa Martinez  
Richard F. and Lillian E. Marvin  
Nolan Marx  
Tony Masingale  
Barbara Masoner and Scott Goodman  
Sara Matlock  
Richard P. Matsch  
Kelly Matthews  
Brendon Matthias  
Sarah Maxwell  
John A. and Sonja L. May  
Wayne H. and Catharine A. May  
Peggy McCharen  
Charles and Catherine McClean  
Bruce B. McCrea and Karen L. Littlefield  
Robert L. and Deborah A. McCrery  
R. Marilyn McDonald  
Vera J. McDonald  
Janet McIntyre and Edward Ohrt  
Lawrence and Marjorie McKenna  
Molly McLaurin  
Ramon G. and Kathleen T. McLean  
Gerald R. and Linda L. McLeland  
Christopher McMillan  
Clifford J. and Sandra G. McRae  
Heather McVoy  
Mabelle F. Meadows  
Ralph and Lorraine Memmer  
Michael and Dela Menze  
Robert A. Metz  
James A. and Alta M. Meunier  
Carolyn Burks Meyer and Joseph Snyder Meyer  
Ronald C. and Jean A. Meyer  
Stephen and Wendy Meyer  
Jane Michaels  
Kendra Sue Miller  
Michael Miller and Carol Murphy  
Nina Miller  
Stephanie Miller  
John G. and June W. Neil  
Janice R. Neleigh  
Harold S. Nelson  
Linda Wagner Nelson  
George and Susan Mitchell  
Peter and Susan Mitrovic  
David A. Mobley  
Robert H. and Sarah S. Moench  
Inder Mohan and Reva Nayar  
Jennifer Monsell  
Bruce R. and Deborah E. Montgomery

W. Robert and Jeanne Montgomery  
Allison Moody and Susan Parks  
Vincent and Suzanne Moon  
William Moon  
Richard E. and Angela J. Moore  
Royl K. and Rebecca S. Moore  
Steve A. Morales  
Douglas Moran  
David A. Morgan  
John R. and Rosemary P. Morris  
Michael Morris  
Robert A. and Michelle J. Morroni  
Brian S. Morrow  
Jeff Morse  
Sheryl Mosbarger  
James R. and Julia A. Moseley  
William and Mary Moser  
Susan Mostow  
Jane F. Mountain  
Cynthia A. Mousel  
Thomas C. Moyer  
Elizabeth Mozer  
David K. Mueller and Connie R. Kowal  
Larry A. and Mary K. Mueller  
Norman Mueller and Christine Murphy  
Steven F. and Barbara J. Mueller  
Frances E. Mullins and William H. Black  
Dale and Shirley Murphy  
Stephen P. and Elizabeth M. Murphy  
Howard D. and Reta E. Murray  
Robert Musgraves and Joan Prusse  
Austin E. and Helen E. Mutz  
Jan Myers  
Dennis and Kathleen Meyers  
L.A. and A.C. Myers  
Robert and Jane Nagel  
Mike and Jan Nagl  
Craig S. and Joan B. Neckers  
Owen Nehler  
John G. and June W. Neil  
Janice R. Neleigh  
Harold S. Nelson  
Linda Wagner Nelson  
George and Susan Mitchell  
Peter and Susan Mitrovic  
David A. Mobley  
Robert H. and Sarah S. Moench  
Inder Mohan and Reva Nayar  
Jennifer Monsell  
Bruce R. and Deborah E. Montgomery

Robert C. and Judi S. Newman  
Kathy A. Newton  
Mai Nguyen  
Robert B. and Noreen H. Nicol  
John C. Nielson  
Alan F. and Colleen R. Nies  
David and Judy Niewald  
Andrew Niil and Carol Zapalowski  
Rod E. Noble  
J. W. and Elizabeth Nollenberger  
Patricia A. Norris  
Ann Norton  
Nancy K. Novinger and James A. Haggerty  
Raymond R. and Bernadette M. Novy  
Kenneth and Marjorie Nowick  
Carol L. Oakes  
Beverly Obenchain  
David and Leann O'Brien  
Alan Ogden  
William D. Ohs  
Burton S. and Shirley N. Olde  
Linda L. Olsen  
Patrick D. Olsen  
Elaine M. Olson  
Eric Olson  
Suzanne Olson  
Craig S. Orbanosky  
Sam and Kathryn Orr  
Scott and Amy Ortiz  
Garland A. and Bobbie R. Osborne  
Bob Overstreet  
Laurene Brooks Owen  
Chris E. and Cynthia K. Owens  
Lindsay Packer  
Cheryl Painter  
Evelyn M. Painter  
Michael S. and Therese T. Paranka  
Kevin and Holly Parker  
Jeffrey Parris  
Molly J. Parrish  
John D. and Mary Beth Patterson  
Chester F. Pauls  
Dean and Gretchen Pearson  
Jeffrey and Jessica Pearson  
Joan P. Pechman  
Mary M. Peel  
Don and Joyce Peluso  
Robert and Erna Pelz  
Emily Perutto  
David A. and Diana J. Peters

Holly Petersen  
David Peterson  
Drew and Bethany Peterson  
Marc Pfefferle  
Dale Phannenstiel  
James D. and Lillian Sue Phelps  
David P. and Elizabeth Ann Phillips  
Harald and Karen Pigler  
Heidi Pilloud  
Frances L. Pizer  
Wayne Plakmeyer and Jeannie Schuman  
Fay J. Plummer  
William H. and Marilyn M. Plummer  
Rae G. Polis  
Joel Pollack and Abby Ferber  
Patty A. Polisky  
Bret R. and Marlain E. Poole  
John E. Popovich and Nancy L. Juday  
Daniel Poremba  
William D. Ohs  
Burton S. and Shirley N. Olde  
Linda L. Olsen  
Patrick D. Olsen  
Elaine M. Olson  
Eric Olson  
Suzanne Olson  
Craig S. Orbanosky  
Sam and Kathryn Orr  
Scott and Amy Ortiz  
Garland A. and Bobbie R. Osborne  
Bob Overstreet  
Laurene Brooks Owen  
Chris E. and Cynthia K. Owens  
Lindsay Packer  
Cheryl Painter  
Evelyn M. Painter  
Michael S. and Therese T. Paranka  
Kevin and Holly Parker  
Jeffrey Parris  
Molly J. Parrish  
John D. and Mary Beth Patterson  
Chester F. Pauls  
Dean and Gretchen Pearson  
Jeffrey and Jessica Pearson  
Joan P. Pechman  
Mary M. Peel  
Don and Joyce Peluso  
Robert and Erna Pelz  
Emily Perutto  
David A. and Diana J. Peters

Arthur D. and Maria M. Richmond  
Ray L. and Susan M. Rider  
Barbara Rino  
S. L. and P. J. Ritter  
JoAnn Rivera  
Michael Roark  
Edward C. Robb  
Jeanne Robb  
Martin D. Robbins  
James A. Roberts  
Richard S. and Priscilla H. Roberts  
Linda Roberts-Zinn  
Patricia E. Robichaux  
Robert C. Rohan  
Stephen T. Rose  
Steven and Cordelia Rosenberg  
Richard R. Rosenblatt and Martha R. Houser  
Ann Ross  
Robert R. and Colleen E. Rostad  
Eric A. Roth and Vicki A. Tiedeman  
John C. Roth and Diane L. Haskin  
Patricia S. Roth  
Michael and Susan Sabol  
Dennis Salazar  
Emanuel and Joanne Salzman  
Donna Samuels  
Eric Samuelson  
Keith B. and Joan E. Sanders  
Winnie C. Sanders  
Harriet Saper  
Aida Sarmast  
Kathleen Schaefer  
Paul and Julia Scheele  
Carl and Carolyn Schiele  
Donald and Rosalie Schiff  
Skip B. Schlenk  
Daryl C. and Robert J. Schmitt  
Laurence F. Reuter  
Marian and Arleta Rewers  
Eddy Reyes  
Reid T. Reynolds  
Amy Rich  
Carrie M. Richardson  
Roberta M. Richardson

John B. Schwartz  
 Mary Steffens Schweitzer  
 Adam and Stephanie Scoville  
 Tod Seebrook and Lynn Sander  
 Matthew Seefeldt  
 M. Bradley and Ruth Segal  
 Nancy Seibolt  
 Vincent L. Sena  
 David M. and Della F. Setter  
 Robert M. Severson and Lora R. Freeman  
 Patricia Sexton  
 Fred G. and Cynthia L. Seymour  
 Kathleen Sgaamma  
 John and Isabel Shanahan  
 Timothy J. and Annie L. Shanahan  
 Nancy and Rick Shanks  
 William R. and Barbara C. Sharp  
 Larry and Vicki Sharrar  
 John G. and Elizabeth K. Shea  
 Kathleen Shea and Susan Cobb  
 Kevin G. Shea  
 Charles and Shirley Sheets  
 David Shelton  
 Steven P. and Brenda L. Shepard  
 Susan B. Sheridan  
 Jason C. Shermer  
 Mark Sherock  
 Adam Shery  
 Dennis and Susan Shinnors  
 David J. and Mary Ann Shoenberger  
 Moras and Erne Shubert  
 Troy Shults  
 John W. and Linda M. Shupe  
 Aaron Sidder  
 Gary Aaron Sidder  
 Bruce T. and Theresa L. Sidebotham  
 Stanley F. Siefer  
 Robert D. and Shirley A. Siek  
 Helen Sierminski  
 Edward E. and Jean E. Simon  
 Deborah W. Simons  
 Tom and Janet Sims  
 William Sirois  
 Robert John Siska  
 Jennifer A. Sivertson  
 Sue L. Smallwood  
 John and June Smigel  
 Jon C.M. and Mary E.C. Smith  
 Stanford and Dianne Smith  
 Stanley Smith

Harvey E. and Maureen M. Solomon  
 Joseph and Joyce Solomon  
 Laszlo F. and Jeanine D. Soos  
 Tracy Sopchick  
 Michele Sorensen  
 Nathan and Holly South  
 Ellen P. Spangler  
 Steven G. and Donna G. Spearman  
 Sean T. and Sarah L. Spillane  
 Kenneth K. Sprague  
 Ed and Dee Sprinkle  
 Patrice A. Spurck  
 Dianna Spurling and Thomas Spurling III  
 Robert Staes  
 Greg R. and Jill D. Staffelbach  
 Darryl and Shirley Stafford  
 Carol L. Stark and Jackie L. Markey  
 Philip H. Stark  
 Esther Starrels  
 Cheryl L. Stearns and Carl P. Coffman  
 Steven J. and Kristina S. Stem  
 Barbara E. Sternberg  
 Marion P. Steward  
 Frank E. Stewart  
 Marguerite Stewart  
 Chris A. Stickline and Kelley C. Roach  
 Diane Stille  
 J. Paul Stillwell  
 Robert N. and Nancy A. Stocker  
 Steve Stofka  
 Katherine Stollenwerk  
 Jim and Holly Strabizky  
 Cheryl H. Stratten  
 Michelle Sturm  
 James P. Sullivan  
 Judith E. Sullivan  
 Eleanor L. Swanson and Robert W. Fogerty  
 John L. and Valerie L. Switzer  
 Sophia Symko  
 Stephen and Beatrice Szadokierski  
 Melissa Szucs  
 Robert H. Tabares  
 Donna J. Tanner  
 Carol J. Taylor  
 Richard Tenny  
 Richard and Annette Thayer  
 William C. Theimer, Jr.  
 Michael and Christine Theis  
 Robert P. and Sue S. Thibault  
 Suzan M. Thomas

Sylvia R. Thompson  
 Bruce and Penny Thron-Weber  
 Lillian S. Tinsley  
 Curt Todd  
 Michael and Patricia Toft  
 Teresa G. Torres  
 Michael and Pegi Touff  
 Earl and Barbara Trexler  
 William Tribble  
 Robert C. Tripp  
 Thomas and Debra Tripp  
 Mike D. Trolinger  
 Leigh Truitt  
 Howard L. and Susan L. Turetzky  
 Joseph L. and Lana M. Turner  
 Alison L. Tyler  
 Julia M. Tyler  
 Kimberley H. Tyson  
 Robert Tyson  
 Manfred and Kristen Uebelhoer  
 Joan F. Urton  
 Jose L. and Dolores V. Valdez  
 Joel and Karen Van Cleve  
 John W. and Julie B. Van Laanen  
 Chris and Ivone Van Wyk  
 Mark C. Vappi  
 Katharine L. Varnes  
 Fariborz and Leili Vassighi  
 Josh and Katherine Vaughn  
 Barry G. and Becky E. Venetta  
 Randall James Vetter  
 Lloyd A. and Mary D. Vickery  
 Steve and Cathy Villalobos  
 Stephen D. Vogler  
 Lawrence E. and R. Cheryl Volmert  
 William F. Von Drehle  
 Romita Wadwa  
 Edward J. Wagner  
 Joseph E. Wagner  
 Stephanie Wagner  
 Thomas H. and Deborah S. Wagner  
 Julie A. Wakefield  
 W. Simeon and Janis Q. Walker  
 Joseph P. and Gail E. Walkowich  
 Virginia C. Walsh  
 Jackson P. and Hilda C. Ward  
 Susan K. Warner  
 Dagmar and Daniel Warvi  
 Douglas R. Watson  
 Helga Watt

Sanford and June Watzman  
 Galen and Carolyn Weaver  
 Scott A. Webber  
 Harold J. and Lois M. Weber  
 Michael L. and Sally R. Weber  
 John A. and Alice F. Weeda  
 F. Earl Weiler  
 Wayne Weirich  
 Susan Weinstein  
 Claudia D. Weirich  
 Thomas L. Weiss  
 Barbara C. Welles  
 Mary V. Wells  
 Kyle Wentz  
 Robert J. and Mary O. Werner  
 Chuck West  
 Julie M. Tyler  
 Karen Westrell  
 Barbara Whalen and Richard Wagner  
 Michael D. Whalen  
 Peg Whalen  
 Robert and Dottie Wham  
 J. R. and Josephine R. Wheeler  
 Bill Whitacre  
 Ida Mae Whitcomb  
 James J. and Dianne D. White

Madeline J. White  
 Kelli K. Whitehall and John B. Davis, Jr.  
 Karen L. Whitney  
 Karla Whittenburg  
 Susan Whittlesey  
 William H. Wierman  
 Steven and Sandra Wiersma  
 Ray E. and Mary M. Wilcox  
 Arthur O. Wilkonson  
 Sean Willard  
 Anne L. Williams  
 Samantha A. Williamson  
 Hugh H. and Ramona J. Wilson  
 Jack R. Wilson  
 Judith and Kenneth Wilson  
 Marlene Wilson  
 Brian Windley  
 Patrick and Stacy Wing  
 Michael F. and Anita M. Winter  
 Jack D. and Sally A. Zilis  
 Albert H. and Rebecca F. Woehrle  
 Randall J. Wolf  
 Bruce Wolff  
 Porter S. and Gail E. Woods  
 Arthur Wouk  
 Connie J. Wright

Paul J. Wright and Pamela F. Tyrrell  
 Pamela P. Wulsin  
 Kon Wyatt, III  
 David D. Wymore  
 Ray Wynfield  
 Patricia Wynne  
 Jeffrey Yamasaki  
 Shaun and Debbie Yancey  
 Jennifer L. Yarbro  
 James A. and Sydney P. York  
 Tonya Yoshioka-Smith  
 Ronald C. and Ann S. Young  
 Jacalyn Youngblood  
 Jennifer F. Younger  
 Charles T. Zabel  
 James Zachary and Lacy Cooley Smith  
 Edward and Laura Zahren  
 Robert M. and Margaret A. Zenn  
 James Zerefos and Rebecca Duray  
 Sara D. Winter  
 David F. Zinger  
 Michael C. Zink  
 Mark and Pam Zwickl



**\$50 - \$99**

John F. and Carol S. Abel  
 Stephen and Donna Abernathy  
 Mary V. Ackerman  
 Marlene Adam  
 Louis F. and Claire B. Addis  
 Angie Aguirre  
 Harlen Ainscough  
 Sharon A. Allen  
 Harmon and Janey Alpert  
 Lance Altizer  
 Thomas Anastos  
 Joe and Karen Anaya  
 L. Jonell Andersen  
 John L. and Maryann S. Andrews  
 James R. and Mary K. Antes  
 Angela C. Antrim and Robert F. Gdovin  
 Judith Arensmeyer  
 Karen L. Arko  
 Harry R. and Judy L. Arnold  
 Pete and Carol Atzman  
 Paul and Cheryl Atzmiller  
 Saul and Judith Axelrad  
 Dayle Axman  
 J. Axtell  
 Agerico and Linda Ayala  
 Donald and Marie Ayers  
 Elizabeth A. Ayers  
 Bea Bachenberg  
 Don Bachner and Linda S. Henry  
 Judith R. Baenen  
 Joyce Baier  
 Haley R. and Norma J. Baker  
 Sharon A. Ballard  
 Antone and Kristine Baltz  
 Angela Barako  
 Carlotta J. Barnes  
 Richard L. and Barbara J. Barnett  
 Trevor Bartel  
 Mark and Susan Barter  
 Roxana Bartlett  
 Eric and Darcy Bauer  
 Linda Bay  
 Norma E. Bayless  
 Steven R. and Barbara J. Beckman  
 Deborah Lee Behrens  
 Don Bensinger  
 Michael A. and Karen D. Bent  
 Barbara Berryman

Paul Berteau  
 Michael C. Beutz  
 Harvey Beyer  
 T.L. and A.S. Bibbero  
 Michael and Anita Bierman  
 Stephen M. and Shelley H. Billig  
 Casey and Lesli Bishop  
 Sara E. Blake  
 Clifford and Natalie Bloch  
 Jessma O. Blockwick  
 Gary J. and Joyce M. Blubaugh  
 B. and A. Blum  
 Paul Bodeck  
 Neely H. and Joyce M. Bostick  
 Christy Bouchard  
 Melba Bouquet  
 Jim Bowers  
 Justin Boyd  
 Mary A. Boyle  
 Elaine B. Bracker-Campbell  
 Eric Braden  
 Richard M. and Mary I. Bradley  
 Kevin V. and Carol S. Brady  
 Anita Burki Bragg  
 Mark Brandes  
 Greta Brandstetter and Martin McCabe  
 Beverly Ann Brauer  
 Jennifer Breitman-Bacon  
 Robert B. Bricca  
 Robert A. Brockmann  
 Molly Broeren  
 Jane P. Bronson  
 L. Michael and Jennifer M. Brooks  
 Austin R. and Ann B. Brown  
 Trudy B. Brown  
 Valerie G. Brown  
 Warren C. Brown  
 Richard D. Bruss  
 Charles A. Brug  
 David Brunell  
 Bo Brustkern  
 J. Kern Buckner and Gretchen A. Frey  
 Joshua and Michele Bugos  
 Patricia Buikema  
 Tara Burgei  
 Colleen Burgin  
 Jeanne C. Burks  
 Roger Burnell  
 Jennifer Buster  
 Christopher S. and Judith A. Butler

Bonny D. Byrd  
 Richard H. and Faye S. Byrd  
 Chad S. Caby  
 Chris Cahill  
 Sherrie A. Caldwell  
 Barbara H. Caley  
 Jennifer J. Campbell  
 Stephen L. Canges  
 Sara E. Blake  
 Clifford and Natalie Bloch  
 Jessma O. Blockwick  
 Gary J. and Joyce M. Blubaugh  
 B. and A. Blum  
 Paul Bodeck  
 Neely H. and Joyce M. Bostick  
 Christy Bouchard  
 Melba Bouquet  
 Jim Bowers  
 Justin Boyd  
 Mary A. Boyle  
 Elaine B. Bracker-Campbell  
 Eric Braden  
 Richard M. and Mary I. Bradley  
 Kevin V. and Carol S. Brady  
 Anita Burki Bragg  
 Mark Brandes  
 Greta Brandstetter and Martin McCabe  
 Beverly Ann Brauer  
 Jennifer Breitman-Bacon  
 Robert B. Bricca  
 Robert A. Brockmann  
 Molly Broeren  
 Jane P. Bronson  
 L. Michael and Jennifer M. Brooks  
 Austin R. and Ann B. Brown  
 Trudy B. Brown  
 Valerie G. Brown  
 Warren C. Brown  
 Richard D. Bruss  
 Charles A. Brug  
 David Brunell  
 Bo Brustkern  
 J. Kern Buckner and Gretchen A. Frey  
 Joshua and Michele Bugos  
 Patricia Buikema  
 Tara Burgei  
 Colleen Burgin  
 Jeanne C. Burks  
 Roger Burnell  
 Jennifer Buster  
 Christopher S. and Judith A. Butler

Thomas Cuttita  
 Raj and Nathalie Dani  
 Lewis Daniels  
 Michelle M. Daniels  
 Robert Dasher  
 Lloyd Davis  
 William and Kathleen Davis  
 Stephen L. Canges  
 C. Elaine Carleton  
 Georgine B. Carlson  
 James F. Carr  
 Ronald G. DeBell  
 Rolf F. and Mary Lee Dehmel  
 Tye Deines  
 Vicki Derryberry  
 Jyotindra I. and Kokila J. Desai  
 Charles Diamond  
 Lara Dicus  
 Jacqui and Clint Dietrich  
 Peter J. Dignan  
 Craig Dinan  
 Betty L. Dittmar  
 J. and P. Doak  
 Lila Dodd  
 Charles and Vicki Dolezilek  
 Louis B. and Sheila K. Domenico  
 Victoria J. Doran  
 George Douglas  
 Maureen D. Douglass  
 Jim and Karen Doyle  
 Diane DuBois  
 Donald Collins  
 Timothy R. Collins  
 Stacy Colodny  
 William Comerford  
 James and Adrienne Condon  
 Mary M. Connelly and David L. Wurtzebach  
 Janice C. Connolly  
 Carol A. Conrad  
 Patricia Cordova  
 W. Milton and Beverly Cowan  
 Patricia D. Cowan  
 Pat Coyle  
 Michael Crader  
 Danford W. Eldridge  
 Donald and Cornelia Elliott  
 Burton E. and Ann J. Emory  
 David Emrich and Mary Hemmingway-Emrich  
 Lance Enders  
 Larry J. and Holly S. Engelken

Barbara A. Englert  
 Fern R. Epstein  
 Seymour and Miriam Epstein  
 Charles A. Espinosa  
 Donald Esser  
 William and Nancy Esterbrook  
 Jeannette V. Euser  
 Kathy L. Evans  
 Pryor J. Evans  
 Sharon T. Evans  
 Rance R. and Amy L. Exline  
 Jennifer Eyler  
 Vicki L. Faber  
 Peter and Margaret Faciszewski  
 Don W. Fahrenbrink  
 Kathleen Ferguson  
 Maria E. Ferguson  
 Richard and Alix Ferranti  
 David L. Fey  
 Sarah Fey  
 Mark J. and Kristy L. Fine  
 Marion Fischel  
 Dennis J. and Janet L. Flaherty  
 John and Lynn Fleming  
 D Fogle  
 Lee W. and Gail H. Forker  
 Nancy K. Foster  
 Kathryn E. Fothergill  
 Martha Fouse-Ohr  
 Karen Foxwell  
 Tim and Ginna Francis  
 Michael L. and Christina R. Francisco  
 Norman Frank  
 Andrew M. Freeman  
 David and Tirzah Friedman  
 Philip Wren Fritzman  
 Elizabeth B. Funk  
 William and Natalie Funk  
 Charles L. Ehrenpreis  
 Mary C. Eichler  
 Stanley R. Eilert and Paula G. Padilla  
 Christie Einspahr  
 John and Mary Eisenbeis  
 Douglas K. Eldred  
 Danford W. Eldridge  
 Donald and Cornelia Elliott  
 Burton E. and Ann J. Emory  
 David Emrich and Mary Hemmingway-Emrich  
 Kenneth A. and Elizabeth B. Gershman  
 Ronald G. and Patricia A. Gianna

Jeanette S. Gilbert  
 Patricia A. Gilman  
 Richard L. and Annette J. Gilman  
 Lanelle P. Gilmore  
 Shirley M. Gilmore  
 Arlena Giurardo  
 Barbara M. Glaser  
 Gene Glasser and Nanci J. Hannon  
 Gregory and Renee Glissmann  
 Rashmi Goel and Mike Alper  
 Jane Goldman  
 Charlotte H. Goldsmith  
 Mary M. Golten  
 Brandon Graffeo  
 Glenn R. and Linda M. Graham  
 John W. and Myriam C. Grant  
 Sharon E. Gratien  
 Jean R.  
 Edward R. and Ruth A. Gray  
 Andrea C. Green  
 Carolyn J. Green  
 Alan D. Greenberg  
 Dorine Greene  
 Gary W. and Valerie W. Gregory  
 Jessica L. Grether  
 Elizabeth Ann Grieser  
 Mary K. Grieser  
 Gordon and Geraldine Griffin  
 Lonnie L. and Jacquelyn K. Groe  
 Catherine Groene  
 Faith Amy Gross  
 Michael L. and Karen P. Gross  
 Thomas P. and Karen P. Gross  
 Hans Grosskreuz  
 Beverly A. Gunst  
 Janean Gurski  
 Donald P. and Linda B. Gutstadt  
 Donald and Debra Gwinner  
 Donald R. and Bernita L. Hadley  
 James D. and Ann T. Haggard  
 Eric Haglund  
 Louie and Domicilia Gallegos  
 Tim Garvey  
 James T. Hall  
 Mary K. Halsey  
 A. J. and Pamela Hamilton  
 Mishel Handler  
 Bruce Hann  
 Reidar Hansen  
 Kaaren K. Hardy  
 Michael M. Hare  
 Martin J. and Julie S. Harrington

Denise L. Harris	G. Roger Jensen	Andrew T. and Judy B. Kramer	John R. and Judy B. Lowry	William C. and Virginia L. McGehee	Ann Nagel	Pambos and Susan Polycarpou	Robert L. and Bonnie J. Ruckman	Michael P. and Lynn M. Slouka	Margaret Szoke	Steven M. Wallace	Mark Ziegert
Virginia L. Hase	Chrisopher Jimrogliou	David P. and Jennifer E. Kramer	Holly Ludwig	Tim E. and Melody F. McGinnis	Rachelle Naishtut	Amy Pope and Steven Gomez	Estella Rummelein	Susan Smarr	Sabrina Taggart	Justin and Nina Ward	Douglas and Amy Ziegler
Lynn Hathaway	Thomas and Marlene Johancen	E. Richard Kress	Wilbur and Jane Luthye	Bryan and Lindsay McKae	Alana Nast	Adrienna Popp	Mary J. Runge	Alana Smart	Nancy Talley	Amy E. Warner	Doug D. Zimmerman
Jennifer Hawkins	Derek D. and Julie T. Johns	Tesha Kroll	Audrey L. Lynch	Mark R. McKissick	Walter J. and Muriel E. Nees	Mary A. Poppino	William C. and Peggy M. Rupp	Patrick J. and Kathleen A. Smid	Jerry J. and Marla G. Tanner	Laura J. Waterworth	Donald L. and Priscilla K. Zink
Eileen P. Hayes	Jeffry B. and Debra M. Johnson	Jonathan B. Kruljac	John F. Lyden	Linda A. McLane	Brent and Maurine Nelson	Daniel W. Porter	Daniel W. Porter	Jack L. Smith	William R. and Jan M. Tecklenburg	Edward and Linda Wax	Shawn P. Zinnen
Bonnie R. Hazlett	Joyce Johnson	Mary Ann Kruse	Troy and Jennifer Lynette	G. Robert and Kathleen J. McLaughlin	Kenneth Nelson and Kathy Martin	George H. and Della J. Porter	Donald G. and Margaret M. Sandner	Melanie Smith	Janice E. Temple	Shirley Waxman	Christine J. Zisch
David C. Hedlund	Kenneth Johnson and Helen Norton	Carl Kylander	Jeff and Kay MacDonald	Patrick L. McLaughlin	Sigurd and Dianne Nelson	K. Scott and Kristine Poston	Silvina Sansot	William K. and Teryn S. Smith	Lee J. and Enola A. Terry	Carol E. Weaver and Gregory A. Iwan	
Mary Hegy	Robert Johnson	Susan and Michael Ladley-O'Brien	John C. MacKenzie	Roy D. and Theresa M. McMillan	Donna Newman	Rachel Prago	Stephanie Santé	Donald M. and Katharine C. Snyder	Thomas W. and Jeanette I. Teske	Jan Weipert	
Elvin R. and Beth L. Heiberg	Mary Johnson	Dennis W. and Marilyn J. Lafferty	Thomas D. Mackenzie	Jon and Beverly McNutt	Cuong Nguyen	Thomas F. Prosia and Beverly Hathaway-Prosia	Joseph G. and Tracy A. Sargent	John and Celia Snyder	Robert Tews	Albert L. and Karen L. Weismeyer	
Robert D. and Betty B. Heldenbrand	Ryan Jones	Harold A. and Lillian M. Lafleur	Lorraine Madrid	Darrell and Dawn Mead	Brett Nickerson	Connie A. Purdy	Kathleen Saunders	David R. Solomon	Gerald D. Thaler	Adam L. and Kerrie C. Weitzel	
Carrie Henderson	Ann and John Jordan	Michael and Joanne Lafond	James H. Maguire	Ari Melmed	Randy and Renee Nickerson	Merlyn E. Queen	Christine B. Schaefer	Gregory J. Sorensen	George L. and Jean S. Theobald	Mark F. and Catherine G. Welch	
Gail Henderson	Norman and Adellee Joseph	Kelly Laman	Norma Mendez	Judith A. Nielsen	Ken and Kathy Schaefer	Ernest Leonard Quenon	Ken and Kathy Schaefer	Neil and Dena Sorokin	Stephen and Lee Thomas	Susan Wennerstrom	
Leslie Henson	Helene Kafka	Bob and Cynthia Lamb	Lise Menn	Gary L. Niemann	Jordan Scharg	John P. and Johanna S. Quinlivan	James and Janis Spencer	Ronald E. Spears	Larry D. Thompson	Stephen M. Werner	
Jan Stone Henwood	Jeffrey Kahn	Richard F. and Linda A. Lamb	Philip and Margaret Mercorella	Nicole R. Nies	Lawrence G. Scheirman	Peter Quinn	Steve and Helen Raabe	James and Sara True	Sheila M. Thompson	Steven A. and Catherine N. Werner	
Michael Hernandez	John J. Kalen	Walter Lamendola and Nancy Van De Mark	Jeanne C. Merrill	Henry and Sue Noble	Stanley Scheller	Steve and Helen Raabe	David Ramich	Troy A. Stabenow	Wanda and Peter Titus	Harvey and Betty West	
Alexander and Nancy Herzog	William E. and Noriyo Y. Kaluza	Richard D. and Dorothy V. Lamm	Evan Metcalf and Mary Crawford	Sara E. Noll	Sandra K. Scherer	Eric Ramirez and Marty Swickard	Eric Ramirez and Marty Swickard	Crystal C. Star	David and Marilyn Tooley	Krisann West	
Roberta W. Hillman	Gregory B. and Linda M. Kanan	John and Lynda Lane	Samuel D. Mame and Judith B. Cassel-Mamnet	Mari Mier	James R. Schmitt	Alice E. Ranney	Alice R. Ray	John R. Torres	John R. Torres	B. Curtis and Sue H. Westen	
Rexford L. Hilton	Walter and Alicia Kane	Kristin Lang	Ardis T. Manschreck	Billy B. Miller	Russel L. Schmucker	Alice R. Ray	Sheldon Real	Pam Stearman	Robert and Laura Tracy	Gary L. and Phyllis D. Whitaker	
William S. Hilton	Zachary Kaplan	Thomas J. Lang	Bonnie Margolin	Clara B. Miller	John A. and Larayne G. Schoon	Sheldon Real	Charles and Marjee Reece	Joan E.T. Stearns	William Tracy	Rodrick and Holly White	
Jean Hodge	Lawrence and Irit Karsh	Roger and Michele Larkins	Terry and Marilyn Marinelli	James G. and Helen L. Nussbaum	Mirella Schreiber	Edward T. and Emily A. Schroeder	Judy Reed	Eric L. and Terri B. Steiner	Angela T. Treiterer	Richard A. Whitfield	
Donald and Andrea Hoff	Michael and Mary Katsampes	Ken L. and Nancy R. Larner	Nina A. Marquez	Kathleen O' Brien	Edward T. and Emily A. Schroeder	Mary B. Schuchman	O. Catherine Reid	John Steiner and Marc Bansonore	Animesh Tripathi	Dan S. and Elizabeth A. Whittemore	
Roger and Florence Hoffman	Marian Katz	Robert and Gay Lasher	Stephen A. and Mary K. Martin	Dan F. and Carolyn S. Ohearn	Benjamin J. Schulein	Benjamin J. Schulein	Guy Obermeier and Susan Reilly	Ruth Steiner	Joe and Gail Trlica	Donita K. Wickersheim	
Brian G. Hoffmeier and Patricia A. Nies	Keith Kauffman	Roni L. Lavine	Antonia Diana Mashburn	Susan Miller and Richard Curley	Daniel O. and Calista A. Schwartz	Daniel O. and Calista A. Schwartz	John Reynolds	Alfred and Barbara Stell	Tina L. Stenquist	Dennis and Sandra Tucker	
Susan N. Hogan	Ferne D. Keck	Patrick A. and Shelley M. Lawrence	Marty J. Mashe	Susan J. Miller	Russell J. and Amy J. Schwehr	Russell J. and Amy J. Schwehr	Mercedes B. Parker	Guy Obermeier and Susan Reilly	Mitchell S. and Gloria A. Stephens	Michael B. and Mary R. Tully	
Roy W. Hohn	William Kelso	Robert and Marlene Lederer	David and Pat Maslowski	Nancy W. Milligan	Paula R. Rhodes	Paula R. Rhodes	Gary Parkison	John Reynolds	Jeffrey Schweinfest	Janet and Thomas Tyler	
Joseph W. and Lorraine C. Hohulin	Lewis and Martha Kendall	Shannon Leighton	Adam and Lainie Minnick	John and Mimi Milton	Thijs Rhyne	Thijs Rhyne	Robert L. Parmelee and Janice E. Delarue	John Rhodes	Ronald L. and Nancy O. Schwiesow	Gary C. Uhlenbrock	
Andrew F. and Barbara C. Holdgate	Jere and Patricia Kennedy	Charles S. Lenth	Andrew Mitchell	Adam and Lainie Minnick	Iain and Wendy Riddle	Iain and Wendy Riddle	Don C. and Phyllis A. Rieger	Ronald L. and Nancy O. Schwiesow	Liz Scott	James F. Stewart, Jr.	
Brenda J. Hollis	Robert E. and Phyllis J. Kerr	John and Pamela Leonard	Aaron Duncan and Kerry Mitchell	Mark K. and Elynn E. Matthews	Don C. and Phyllis A. Rieger	Don C. and Phyllis A. Rieger	Barbara S. Rigel	Liz Scott	Patricia Scully	Ralph Stinson Jr.	
Paul Friederich Holscher	Donald P. and Virginia I. Ketcham	Stephen and Virginia Lewis	M. Sherry Mitra	Jennifer Mauldin	Barbara S. Rigel	Barbara S. Rigel	Steven M. and Rebecca J. Rippy	Patricia Scully	David A. and Bette L. Seeland	James S. and Sherri J. Stirbis	
Wade and Yan Houser	Armen Khadilwala	Pamela L. Leyba	Glenn E. Pearson and Denise M. Rogers	Bruce and Linda Mawhinney	Steven M. and Rebecca J. Rippy	Steven M. and Rebecca J. Rippy	Mark Ritkowski	David and Bette L. Seeland	Michael and Patricia Seibert	David and Janice Stockwell	
Doris Houston	Om P. and Merelyn J. Khanna	Mike and Kerry Lichty	Mary Rice Peckham	Graham J. and Jill C. May	Mark Ritkowski	Mark Ritkowski	Louis A. and Bernadette M. Rivera	Michael and Patricia Seibert	Erin Rebecca Seimetz	Christopher and Kristen Stolley	
Hillard H. Howard and Cheryl L. Faust	Gordon J. and Beth J. Kieft	Herrick K. and Mary O. Lidstone	Steve and Kris Peel	Peter and Lois Mayerson	Louis A. and Bernadette M. Rivera	Louis A. and Bernadette M. Rivera	Jessica C. Robblee	Erin Rebecca Seimetz	Kay L. Sellens	Steven M. and Suzanne P. Stone	
John C. and Kelly C. Hranac	George and Jocille Kienlen	Richard and Esther Liesemer	Judith A. Pejko	Joe Mazumdar and Silvina Moscato	Jessica C. Robblee	Jessica C. Robblee	Scott R. Roberg	Kay Sellers	Kay Sellers	Elizabeth Ann Strahler	
Terry Huckins	Lewis and Kris King	Ray E. and Betty L. Lightbody	Carrie Pence	Sigmund E. and Mary K. Mazur	Scott R. Roberg	Scott R. Roberg	Teresa M. Roberts	David and Karen Shander	David and Karen Shander	Mary Anne Strasser	
John G. and Dorothy A. Huddle	Patricia A. Kingery	Timothy C. and Mikki E. Lind	Bonne L. Pendleton	John and Yoko Mooney	Carrie Pence	Carrie Pence	John J. Roberts-Niemann	Tonna M. Shanks	Tonna M. Shanks	Donna M. Shanks	
Matthew Huebner	Joseph and Nora Kiser	Daniel R. and Kathleen R. McCamman	Carol and Jeraldine Peoples	Christopher W. Moore	Donna M. Shanks	Donna M. Shanks	John J. Roberts-Niemann	Steve and Ninette Shappell	Steve and Ninette Shappell	Norman G. and Myrna J. Vergen	
Bernice Huff	David M. Kissel and Ludmila E. Matrosova	Terry and Pamela McClelland	Melinda Percell	Ellen Jean Morris	Norman G. and Myrna J. Vergen	Norman G. and Myrna J. Vergen	Sharon Robertson	Loretta A. Sharp	Loretta A. Sharp	Robert and Pat Vick	
Sandra L. Hufford	Nobie and Holly Kitagawa	William C. and Jayne E. McClure	Kim R. Perez and Susan S. Perez	Pamela Morton	Sharon Robertson	Sharon Robertson	Sharalynn A. Rocha	Christopher and Christine Shephard	Christopher and Christine Shephard	Charles Vigil	
Gary and Susan Hurrelle	David W. and Ramona R. Klaus	Richard and Alicia Morton	Jonathan and Lisa Perlmutter	Richard and Alicia Morton	Sharalynn A. Rocha	Sharalynn A. Rocha	Gordon and Nancy Rockafellow	Mary K. Shobe	Mary K. Shobe	Deborah S. Vink	
Kristina J. Hutchins	Harold and Debbie Klawitter	Mike N. and Mary A. Moscoso	Mary L. Mosier	Mike N. and Mary A. Moscoso	Gordon and Nancy Rockafellow	Gordon and Nancy Rockafellow	Mary L. Rogacki	Martha Lee Shwaydyer	Martha Lee Shwaydyer	Michael Vocatura	
Barbara Huttner	Adam and Rima Kleiner	Susan McCord	Richard L. and Ethel C. Phillips	Susan McCord	Mary L. Rogacki	Mary L. Rogacki	John D. Rohrbach	Maureen Sielaff	Maureen Sielaff	Aimee L. Sumner	
Leland and Marilyn Huttner	Mindy Klowden	Alan J. and Carol M. McCormick	Ronney S. and Ruth E. Philpott	Alan J. and Carol M. McCormick	John D. Rohrbach	John D. Rohrbach	Donald and Doris Rohret	Nadine A. Swahnberg	Nadine A. Swahnberg	Eric S. Surrey	
Christopher H. and Patricia A. Isensee	Kathryn L. Kluck	Mandy McCune	Andy Phipps	Mandy McCune	Donald and Doris Rohret	Donald and Doris Rohret	C. J. Rosenstein	Suzanne Swanson	Suzanne Swanson	Arnold and Bonnie Silverman	
Jeffrey A. and Patty S. Jaacks	Raymond C. and Marianne D. Kluever	John E. and Patricia A. McDermott	Jeffrey D. Phipps	John E. and Patricia A. McDermott	C. J. Rosenstein	C. J. Rosenstein	Martha Rosner	Todd W. and Ann L. Swanson	Todd W. and Ann L. Swanson	Arnold and Bonnie Silverman	
David and Paula Jackman	William M. Knudsen	Maureen McDonald	Gary L. and Sarah J. Pickel	Maureen McDonald	Martha Rosner	Martha Rosner	Keith and Sharon Ross	Robert F. and Karen S. Sweeney	Robert F. and Karen S. Sweeney	Julia Simmons	
Bruce M. and Nancy A. Jackson	Christopher J. Koernigs and Jeanne F. Collopy	Monika McDonald	Robert Pierce	Monika McDonald	Keith and Sharon Ross	Keith and Sharon Ross	Robert F. and Karen S. Sweeney	Alex Sirosi	Alex Sirosi	Carol A. Singleton	
Ryan J. and Karin E. Jacobson	Steven Allan Kohen and Cheryl Sue Bailey	Steven McDonald	Joseph and Jamie Pierzchala	Steven McDonald	Robert Pierce	Robert Pierce	Alex Sirosi	Stephen G. and Sandra K. Skiba	Stephen G. and Sandra K. Skiba	Betty A. Skipp	
L. D. and Joyce E. Jamison	Manuel Lopez, Jr. and Geneva O'Brien-Lopez	Kevin L. McDowell	Donald and Jennifer Plum	Kevin L. McDowell	Joseph and Jamie Pierzchala	Joseph and Jamie Pierzchala	Stephen G. and Sandra K. Skiba	Betty A. Skipp	Betty A. Skipp	Brian Slota	
Jo Lynn Jarboe	Teresa A. Lopez	Catherine McElhinney	Adam and Anne Poe	Catherine McElhinney	Donald and Jennifer Plum	Donald and Jennifer Plum	Mickey S. Rovner	Walter H. and Edith H. Rowell	Walter H. and Edith H. Rowell		
John Jaugilas and Nancy Knudsen	Steven A. and Marilyn A. Kozak	Jimmy D. and Jean L. Lovato		Jimmy D. and Jean L. Lovato	Adam and Anne Poe	Adam and Anne Poe					

Jim Arndt	Anna M. Baxter	Mike J. Blanchard	Elaine C. Brookfield	Christopher L. and Marilyn M. Carpenter	Francis W. Clifford	Whitney Crosby	Dorothy M. Dieckman	Adam and Jen Eichberg	John D. and Karen D. Findling	John Gallo	Mark and Barbara Goldstein
Deirdre Arnholtz and Gregory Smith	Heather Bays	Philip G. and Carol A. Blanchard	Walter and Harriet Brooks	Cynthia L. Carpenter	Beverly Clifton	Pete C. and Rita D. Crow	Dennis M. and Kathleen A. Digiulio	Dennis L. and Rita M. Eichner	Barrie Finger	Fred Gamble	Elizabeth Gomez
Barbara J. Arnold	Douglas L. and Gerilyn K. Beahn	Gil and Arlene Bliss	William and Janet Brovsky	Dianna L. Carroll	Melissa T. Clymer	Patricia A. Crowley	Dee J. Dillard	Lawrence B. and Mary L. Eldridge	Gail A. Finley	Joyce L. Gammill	Jake Gonzales
Lonnie C. Arnold	Robert and Barbara Bean	John and Florence Bliss	Alan Brown	Joan M. Carty	Larry and Rhonda Coapland	Tom Crutchfield and Patricia McFarland	Ronald D. Dilling	Theresa Eldridge	Frances Finnegan	Clyde Garceo	Martha J. Gonzales
Emily Aronow	Richard F. and Myra Jean Beatty	Clement N. and Helen T. Blomberg	Bernard L. and Christina M. Brown	Richard D. Casey	Wallace Coates	Harold Cuddie	Keith Dillion	Cynthia L. Ellis	Paul Fisco	Demitrana Gardner	Samuel F. Gonzales
Wendy Aronson	Johanna Beaudry	Rick A. Blum	Emmett and Charis Brown	Virginia Cass	Leeann R. Coburn	Margaret Love Cude	Diana DiMara	Mark Ellis	Ryan P. and Britta E. Fisher	Kenneth and Marla Gareis	Willnona T. Good
Juan F. Arrieta and Julia Moreno-Debarrieta	Patricia Beaver	Bobby R. Boatner	Elbert and Loretia Brown	Maureen E. Cassulo	Al and Joyce Coco	Addie Z. and Kelly I. Culler	Charles J. and Kathryn M. DiMarco	Rebecca A.D. Ellis	Chelsea K. Flageolle	Johnny C. and Stephanie M. Garnica	Andrea E. Goodin
Jack R. and Joan B. Arrowsmith	Richard and Gayle Bebee	Steven A. and M. Diane Bobrick	Harold and Rose Marie Brown	Bennie I. Castellanos	Suzanne J. Coffman	Dale S. and Suzanne M. Culuris	Roy Dimler	Ruth Else	Thomas A. Flaherty and Christa A. Dueser-Flaherty	Janice C. Garrett	Virginia M. Goodrich
Azatouhi A. Arzaakanian	David J. Becker	Robert Bohannon	Jeffrey and Catherine Brown	Richard A. and Peggy A. Castle	Roberta J. Cogar	Hugh C. and Arlene K. Cumming	Janice Dinner	Sean and Danielle Embree	Letitia A. Fleener	John and Marilyn Gary	Adele Gordon
Theodore Aseltine	Gene F. Becker	Susan Bohney	Jenee Brown	Tina Louise Castro	Andrew I. and Naomi L. Cohen	Edna Cumming	Camillo Disalle	Matthew D. and Lisa P. Emerson	Rebecca A.D. Ellis	J. Rene Gash	Donald R. and Sharon L. Gordon
Karen Asimos	George and Bonnie Becker	Teresa A. Boismier Johnson	Morris and Betty Brown	Lynn B. Cohen	Lynn B. Cohen	Denise Curran	Mark A. and Julie L. Divich	Mary Emlen	Ruth Else	Barbara Sims Fletcher	Edee P. Gordon
Maria Asztalos	Orrin L. and Margaret M. Beckner	John and Marilyn Bolchunos	Sandra J. Brown	Mindy Cohen	Wilbur H. and Kurtis L. Cecil	Allan J. Curtis	Robert L. Dixon	Barbara Sims Fletcher	Sean and Danielle Embree	Kenneth J. Florian	Gayle Gordon
Kathryn I. Atencio	Real J. and Isabel T. Bedard	Mattie P. Boldridge	Thomas and Vicki Brown	Stephen H. Cohen	Margaret Cepeda	David J. Curtis and Jeanine M. Garcia	Robert L. Dixon	Barbara Sims Fletcher	Matthew D. and Lisa P. Emerson	David and Linda Fogel	Linda M. Gordon
Georgia S. Atkinson	David Beers	Gerald T. and Sherri L. Bolus	Wilma A. Bruce	Stephen H. Cohen	Daniel S. and Deborah N. Cernich	David J. and Patricia B. Cwynar	Robert L. Dixon	Barbara Sims Fletcher	Ann K. Engebretson	Susan J. Geer	Susan J. Geer
Merle Atkinson	Irene Belarski	Gary and Pamela Bone	Tiffany N. Brunk	Daniel S. and Deborah N. Cernich	Michael A. and Tarnie L. Coleman	Loretta H. Cybulski	Robert L. Dixon	Barbara Sims Fletcher	Jenifer Doane	Louise Geil	Michael and Yanna Gorelik
Norma M. Austermann	Faye E. Belknap	James R. Bonk	Virginia L. Brun	Shirley J. Cervene	Richard E. and Kathryn M. Colley	Stefan R. and Hanna E. Czernik	Robert L. Dixon	Barbara Sims Fletcher	Terri L. Dodd	Linda Ensign	Robert B. Goss
Stuart M. and Nancy A. Aven	Amy A. Bell	James F. and Mary K. Boomer	James L. Bryn, Jr.	James and Debbie Chaffee	Jacqueline Chambers	Dennis and LuAnn Dahl	Robert L. Dixon	Barbara Sims Fletcher	Beverly Dadds	Melissa Ensing	James R. and Beth S. Grace
Magdalena Avramova	Joseph Bellin	Ed G. Bornmueller	Lisa R. Buchanan and Mark S. Kelley	Jacqueline Chambers	Juristic J. Collins	Dennis and LuAnn Dahl	Robert L. Dixon	Barbara Sims Fletcher	Darren Dodson	Ellen Entwisle	Crystal A. Grace
Stuart A. and Yvonne E. Bader	Michele L. Bello	Forrest J. and Barbara J. Borre	Terry B. and Kathy S. Buck	Marlene Chambers	Jean C. Combelic	Dave W. Dahlberg	Robert L. Dixon	Barbara Sims Fletcher	David S. and Laura B. Dokken	Ralph R. Forbes, Sr.	Ross S. and Dorothy M. Grange
Lauressa M. Baier	Martha A. Bendel	Christopher and Valerie Borton	Lindsay S. Bullot	Viivi S. Chambers	Ralph E. Comiskey	Martha Daley	Robert L. Dixon	Barbara Sims Fletcher	Ellen Dolan	Leslie Ford	Larry D. and Marilyn J. Grauberger
Elsa Bailey	John C. and Leslie S. Benedict	Lynn E. Bosack	Jill Chao	Shiu-Cheung Chan	Fred and Peggy Conklin	Mary Lou Dalton	Robert L. Dixon	Barbara Sims Fletcher	Mary M. Doner	Jacquelyne M. Foroutan	William and Mary Gravely
Frank and Josephine Bailey	John C. and Leslie S. Benedict	Lynn E. Bosack	Jill Chao	Shiu-Cheung Chan	Fred and Peggy Conklin	Mary Lou Dalton	Robert L. Dixon	Barbara Sims Fletcher	Joyce A. Donovan	Roland L. and E. Denise Fortman	Mollie B. Graves
Charles M. and Kerry M. Baker	Shari D. Bengheshir	Agnes M. Bouma	Lloyd W. and Yvonne G. Charles	George and Bonnie Chelwick	Therman Lee Connally	Joyce A. Donovan	Robert L. Dixon	Barbara Sims Fletcher	Patricia R. Donovan	Wilfred and Sharon Foster	Steven A. and Martha R. Gray
Kay Maryon Baker	Linda J. Bowen	Laurence P. Chartrand	Diana M. Burg	George and Bonnie Chelwick	Therman Lee Connally	Patricia R. Donovan	Robert L. Dixon	Barbara Sims Fletcher	Jeffrey A. and Emily D. Darden	Lois Fouts	Fay Green
Patricia Baker	Doug W. Bowls	M. Judy Chavez	Janice A. Burke	George and Bonnie Chelwick	Therman Lee Connally	Patricia R. Donovan	Robert L. Dixon	Barbara Sims Fletcher	Mary C. Connor-Spieler	Jerry L. and Sandra K. Donze	Larry and Margaret Green
Robert N. and Noreen J. Baker	Morris and Marilyn Boxer	Marie L. Chavis	Alvin F. and Carol L. Burkhart	George and Bonnie Chelwick	Therman Lee Connally	Patricia R. Donovan	Robert L. Dixon	Barbara Sims Fletcher	Carol Conrad	Daniel E. and Melva B. Dorak	Larry Green
Luis A. Balbona	Judy Boyer	Christine L. Burns	Judy Boyer	George and Bonnie Chelwick	Therman Lee Connally	Patricia R. Donovan	Robert L. Dixon	Barbara Sims Fletcher	John J. Conway	John W. and Helga D. Doucette	Robert F. and Jo Ann L. Green
Martin S. Balgach	Darin L. and Corrine D. Brachtenbach	Gary E. and Samantha A. Burns	Gary E. and Samantha A. Burns	George and Bonnie Chelwick	Therman Lee Connally	Patricia R. Donovan	Robert L. Dixon	Barbara Sims Fletcher	Estus L. Cook	Barbara A. Douglas	Rodney K. and Rebecca A. Green
Jack and Arleda Ballard	Robert E. and Sally S. Braddy	Larry E. Burns	Larry E. Burns	George and Bonnie Chelwick	Therman Lee Connally	Patricia R. Donovan	Robert L. Dixon	Barbara Sims Fletcher	Leon D. Cooley	Marcus Douglas	Timothy A. Green
Roger J. and Mary E. Ballenger	William S. and Gloria P. Bradford	Moirra E. Burns	Moirra E. Burns	George and Bonnie Chelwick	Therman Lee Connally	Patricia R. Donovan	Robert L. Dixon	Barbara Sims Fletcher	Charles and Claire Cooper	Cindy Deavers	Jean Greenberg
James A. Balmer	David N. Brahinsky	Diane E. Burrige	Diane E. Burrige	George and Bonnie Chelwick	Therman Lee Connally	Patricia R. Donovan	Robert L. Dixon	Barbara Sims Fletcher	Jane B. Cooper	Thomas Dozier and Ruth Schnebbe	Tim L. and Patricia A. Greene
Elizabeth L. Balmes	Stephen and Betsy Brainerd	Margaret L. Bursley	Margaret L. Bursley	George and Bonnie Chelwick	Therman Lee Connally	Patricia R. Donovan	Robert L. Dixon	Barbara Sims Fletcher	Keri Cordova	Robert and Martha Drake	Paul A. and Joanne M. Gregorio
Chester R. Baloney and Helene L. Fisher	Ilona Brandt-Sasin	Linda M. Christian	Linda M. Christian	George and Bonnie Chelwick	Therman Lee Connally	Patricia R. Donovan	Robert L. Dixon	Barbara Sims Fletcher	Richard and Isabelle Cordova	Ray W. and Donna J. Draper	Sinne K. Gregory
Porfiria Bania	Dennis and Elaine Branjord	Sandra A. Christiansen	Sandra A. Christiansen	George and Bonnie Chelwick	Therman Lee Connally	Patricia R. Donovan	Robert L. Dixon	Barbara Sims Fletcher	Anders and Barbara Corell	Paul Drechsler	Roni Greifner
Solomon Bankhead	Rex and Mary Christner	Rex and Mary Christner	Rex and Mary Christner	George and Bonnie Chelwick	Therman Lee Connally	Patricia R. Donovan	Robert L. Dixon	Barbara Sims Fletcher	Jerry Corr	Stephen C. Dreskin and June K. Inuzuka	James and Barbara Ginsburg
Robert and Marcia Bankirer	William E. and Joy F. Christopher	William E. and Joy F. Christopher	William E. and Joy F. Christopher	George and Bonnie Chelwick	Therman Lee Connally	Patricia R. Donovan	Robert L. Dixon	Barbara Sims Fletcher	Benjamin R. Cortez	Preston and Linda Driggers	Marsha Giordano
Richard and Patricia Banks	Erin Butler	Adrian B. and Susan S. Ciazza	Adrian B. and Susan S. Ciazza	George and Bonnie Chelwick	Therman Lee Connally	Patricia R. Donovan	Robert L. Dixon	Barbara Sims Fletcher	Martha Cortez	James M. and Mary Jane Drummond	Jessie R. Greve
Karen M. Barabash	Margaret C. Butler	Ru Ciel	Ru Ciel	George and Bonnie Chelwick	Therman Lee Connally	Patricia R. Donovan	Robert L. Dixon	Barbara Sims Fletcher	Caroly J. Clark	James M. and Mary Jane Drummond	Linda Grey
Johnny and Sharon Barker	Patricia J. Butler	Caroly J. Clark	Caroly J. Clark	George and Bonnie Chelwick	Therman Lee Connally	Patricia R. Donovan	Robert L. Dixon	Barbara Sims Fletcher	Bill Coster	Donald P. and Phyllis J. Dubas	Elisabeth Giulianielli
Charles and Delores Barnard	Derek D. Butts	Donald A. and Eddie L. Clark	Donald A. and Eddie L. Clark	George and Bonnie Chelwick	Therman Lee Connally	Patricia R. Donovan	Robert L. Dixon	Barbara Sims Fletcher	Frank V. Costey and Barbara A. Costey	David and Nancy French	Lewis and Helen Gridley
James O. and Lynne M. Barnes	Ivares P. and Arijia M. Breikss	Jonathan C. and Lynn S. Clark	Jonathan C. and Lynn S. Clark	George and Bonnie Chelwick	Therman Lee Connally	Patricia R. Donovan	Robert L. Dixon	Barbara Sims Fletcher	Peter W. Clark and Mark R. Croteau	James M. and Mary Jane Drummond	Garitt S. and M. Susan Griebel
Shawna M. Barnes	Eileen B. Cahill	George J. and Eileen M. Coughlin	George J. and Eileen M. Coughlin	George and Bonnie Chelwick	Therman Lee Connally	Patricia R. Donovan	Robert L. Dixon	Barbara Sims Fletcher	Richard and Sarah Gail Clark	James M. and Mary Jane Drummond	Bert and Portia Griefenberg
Judith A. Barnett	Susan Canal	Richard Glenn and Sarah Gail Clark	Richard Glenn and Sarah Gail Clark	George and Bonnie Chelwick	Therman Lee Connally	Patricia R. Donovan	Robert L. Dixon	Barbara Sims Fletcher	Daniel Clarke	James M. and Mary Jane Drummond	Janette C. Griego
Jacob and Michelle Barnhart	Kathleen M. Canclini	Daniel Clarke	Daniel Clarke	George and Bonnie Chelwick	Therman Lee Connally	Patricia R. Donovan	Robert L. Dixon	Barbara Sims Fletcher	Howard R. and Marla F. Clarke	James M. and Mary Jane Drummond	Helen P. Griffin
Ardith Barnhorst	Howard R. and Marla F. Clarke	Lynelle Clausen and Angelo Spataro	Lynelle Clausen and Angelo Spataro	George and Bonnie Chelwick	Therman Lee Connally	Patricia R. Donovan	Robert L. Dixon	Barbara Sims Fletcher	Ruth L. Cano	James M. and Mary Jane Drummond	Cleon L. Griffiths
Joseph and Michelle Bartol	Russell K. and Dorothy L. Canterbury	Edward L. and Virginia L. Clayton	Edward L. and Virginia L. Clayton	George and Bonnie Chelwick	Therman Lee Connally	Patricia R. Donovan	Robert L. Dixon	Barbara Sims Fletcher	Russell K. and Dorothy L. Canterbury	James M. and Mary Jane Drummond	Marguerite P. Grigsby
William Bartolomeo	Jack and Lindsay Cantley	Mickie Clayton	Mickie Clayton	George and Bonnie Chelwick	Therman Lee Connally	Patricia R. Donovan	Robert L. Dixon	Barbara Sims Fletcher	John and Kelly Brock	James M. and Mary Jane Drummond	Jackie Gronlund
Erin E. Baschal	Heather Caporiccio	Kay P. Cleaver	Kay P. Cleaver	George and Bonnie Chelwick	Therman Lee Connally	Patricia R. Donovan	Robert L. Dixon	Barbara Sims Fletcher	Marshall Brodsky and Patricia Madsen	James M. and Mary Jane Drummond	Melinda K. Gross
Curt W. Bauers	Michele Carey	Phyllis P. Clements	Phyllis P. Clements	George and Bonnie Chelwick	Therman Lee Connally	Patricia R. Donovan	Robert L. Dixon	Barbara Sims Fletcher	Lynne M. Brohl	James M. and Mary Jane Drummond	Sophie Cross
Samuel Baum	Pat Carey	June M. Cleveland	June M. Cleveland	George and Bonnie Chelwick	Therman Lee Connally	Patricia R. Donovan	Robert L. Dixon	Barbara Sims Fletcher	Sylvia N. Blake	James M. and Mary Jane Drummond	Sharon B. Groten
				George and Bonnie Chelwick	Therman Lee Connally	Patricia R. Donovan	Robert L. Dixon	Barbara Sims Fletcher		James M. and Mary Jane Drummond	Jeffrey Gruye
				George and Bonnie Chelwick	Therman Lee Connally	Patricia R. Donovan	Robert L. Dixon	Barbara Sims Fletcher		James M. and Mary Jane Drummond	Justin Guay



Larry L. and Glenda G. Guernsey	Scott Heekers	Robert J. Horvath	Robert M. Johnson	Joan H. Kennedy	Matt C. and Johanna E. Kugler	Leslie G. Linville	Elizabeth Betsy Marinelli	Kathy McMahan Peeters	Frank A. and Violet M. Montero	William R. Nee	Margaret L. Orndorff
Raines Y. Guinn	Joann D. Helm	Louise A. Hoskins	William and Sharon Johnson	William K. Kenney	Alvin Kuhn	Norman A. and Laura E. Lish	Catherine Marquez-Campbell	Theresa McMillen	Pete T. and Delphine M. Montoya	Dean and Fran Nelsen	Peter Ornstein and Beth Brown Ornstein
Albert and Liane Guminski	Vasha J. Helm	Herbert and Wanda Hotchkiss	Stacy Johnson	Larry and Linda Kent	Edward Kuska	Jay A. and Wendy G. Littlepage	Lynn M. Marshall	Margaret McPherson	Jack D. and Eve M. Moody	Joe and Joan Nelson	Dave A. and Rebecca M. Ortega
Nicoleena Guthro	Carl A. and Karen L. Helms	Deborah L. Hottinger	Donald L. Joiner	Marion L. Kenyon	Thomas Kuspziel	Ronald Littmann	Rick and Ann Marshall	Stephen J. McQuilkin	James and Yu Kyong Moody	Kathleen K. and Frank A. Nelson, Jr.	David R. Ortiz
Joseph J. and Elizabeth F. Guzzi	Donald Helseth	Nancey A. Houston	Teresa A. Jonaitis	Ann Keppler	Patricia M. Kvasnicka	Paul William Lobato	Tom Marshall	Tom Marshall	Marlene A. Moody	Dorothy L. Nelson	Frank F. and Roberta C. Ortiz
Karl E. and Millie L. Haberman	Brenda Henderson	Hanna A. Hubany	Carol A. Jones	Dorothy J. Kern	Marion I. Ladd	Jeanne Loges	Frank and Antoinette Martinez	Mariagnes Aya Medrud	Francine Moon	Martha Nelson	Richard L. and Gracellen M. Ostrander
Peter A. Hackett	Carla W. Henebry	Gerald L. and Karen M. Hudson	Clodeal Jones	Mark C. Kessinger	Robert Lafley	Darrell A. and Dolores C. Lombardi	Martin Martinez Jr.	Timothy and Maureen Medved	Lenora L. Moore	Martha Nelson and Douglas Wentworth	John J. and Antonia Padilla
Russell F. Hager	Lee M. and Jill M. Henton	Geraldine Hudson-Taylor	Darrell and Leah Jones	Rick Ketcher	Burton C. Lanam and Edith S. Clapp	M. F. and S.R. Loner	Francis J. and Mary M. Martorano	Charles R. Megaughey	William Ray Moore, Jr.	Mary C. Nelson	Lucy Padilla
Sheilah M. Hague	Fred Hepp	Robert A. and Brenda F. Hummel	Donald C. Jones	Kevin J. and Paula D. Laprise	Muliha A. Khan	Elaine M. Long	Janet Martson-Wadle	Monique L. Mejia	Josephine B. Moran	Charles and Rosemary Nelson	Ashley Panahi
John R. and Marcia J. Hahn	Lawrence J. and Diane M. Hergott	Carolyn J. Hustis	Nancy L. Jones	Sandi LaRiviere	Julius Khunga	Peter Long and Rosemary Ellis	Donna F. Mast	Remus R. Melendez	Larry B. and Joan M. Morandi	Ruby P. Nelson	Marlene A. Paone
Randy S. Hait	John F. and Lauretta M. Herke	Barbara A. Hutchins	Richard and Beverly Jones	Arthur J. and Meryl C. Kingery	Bob and Connie Larscheidt	Alfonso R. and Maria L. Lopez	Christal R. Masters	David L. Giles and Laura J. Meley	Andres and Karen Moreira	Sarah Nett-Barth	Michael S. and Georgia K. Pappas
Robert A. and Donna M. Halcomb	William N. and Terry B. Herleman	Robert L. and Margaret M. Hutchinson	Robert A. Jones	Dorris B. Larson	Herbert P. Kieffer	Felix Lopez	Margaret E. Mastrandrea	Lynette Melgosa	Linda S. Moreno	Allen Q. Neugyn	Stanford and Anja Paris
Irving and Joan Hale	Bertha Hernandez	Dennis Hutchison	S. A. Jones	Katherine Larson	R. W. and F. A. Kiesnowski	H.C. and Terry Lorck	Sarah M. Matchett	David R. Menter	Jim Morgan	Helen Parker	Helen Parker
Helen Haley	Linden and Maureen Herschberger	Kim A. and Jean P. Hutton	Stanley Jones	Jeffrey B. and Meryl C. Kingery	Jeffrey B. and Meryl C. Kingery	Gregory F. and Krislene M. Lorenz	Beverly Matheson	Christelle E. Menth	Donald E. Morreale	Paige Neunaber	Michael and Patricia Parrett
Erin M. Hall	Jan Hershey	Sybil Hyatt	Suzanne R. Jones	Katherine Larson	Charles P. and Mary Ann R. Kinney	Peter and Michael Losasso	David R. Mattson	Jonathan Mercereau	Johanna I. Morrell	Joan Newby	Lee Parsons
Lawrence M. Hall	Arthur Herzog	Elaine M. Hyde	Catherine Jordan	Sarah Lauer	Pamela J. Kirby	Sharon L. Losasso	Karl Matz	Christopher Merkner and Molly Kugel-Merkner	Brita C. Morris	John and Martha Newman	Ben M. Passarelli
Kathleen S. Halleck	Steven J. and Diane R. Herzog	Steven J. and Diane R. Herzog	Gloria Jorgensen	Renee M. Lott	Richard G. and Ann C. Kirwin	Renee M. Lott	Mark and Sara Anne Maxwell	Neona J. Merritt	J. and Fredrica Morris	Gloria Nez	Michael W. and Diane C. Patrick
Karen D. Hammond	Ahmee E. Hewitt	Ahmee E. Hewitt	Gene and Casandra Jost	Collette Lottor	Mark and Marilyn Klauber	Collette Lottor	James and Laura Mayerl	Hilary L. Messa and Julie E. Messa	Gregory and Tina Morris	Ha Ngan Nguyen	DelMya L. Patterson
R. and J. Hammond	Mary F. Hilko	Mary F. Hilko	Thomas and Mary Joyce	Ruby Loukas	Shirley Kleiber	Ruby Loukas	James L. Mayes	Jodi and Paul Messenich	Lauren Morse	Que and Barbara Nguyen	Gene H. and Dee R. Paul
Andrus J. and Amanda K. Hand	Gordon D. Hill	Gordon D. Hill	Denise M. Juif-Pomerleau	Kenneth R. and Mary E. Lovell	Jon K. and G. Shanley Klitz	Kenneth R. and Mary E. Lovell	Mary F. and James L. Mayes	Dan and Camille Metherd	Mark R. Moscola	Mark R. Moscola	Nina Luanne Paul
Peter C. Haney and Laura K. Padilla	Lance Hill	Lance Hill	Joyce A. Kahler	Larry J. Lovison	Richard D. Knapp	Larry J. Lovison	Thaddeus S. Mazurczyk	John C. and Margaret E. Meyer	Rossann Mosher and Jeff Jordan	Mary D. Nicholas	Marvin W. and Evelyn P. Pearson
Jean A. Hanna	Robert D. and Leslie A. Hill	Robert D. and Leslie A. Hill	Sandra Kailey	Jo Low	William H. and Patricia A. Knapp	Jo Low	Robert J. and Mary R. Mc Graw	Phyllis A. Meyer	Jay and Joyce Moskowitz	Constantine E. Nicholson	Duane B. and Susie L. Paulson
James and Margaret Hannasch	Wesley D. and Julie E. Hill	Wesley D. and Julie E. Hill	Anne Kaiser	Jane S. Lowery	Anne Kaiser	Anne Kaiser	Gerald E. McBride	Richard Meyer	Scott A. Mowrey and Heidi M. McCotter	Leslie L. and Susan J. Noe	Vladimir and Jana Pavlovsky
Rita R. Hanneman	Donald W. and Kathryn A. Hinkley	Donald W. and Kathryn A. Hinkley	James J. Kalasz	Judith R. Lubow	Harold R. Ireland	James J. Kalasz	Hugh P. McCann	Alan Meyers	Rosemary Moya	John J. Nolan	Barbara A. Pedersen
Scott Hansen	Charles A. and Rose M. Hinton	Charles A. and Rose M. Hinton	Edward J. and Linda R. Kammerer	Aileen F. Lucero	Ernest G. and Ina M. Irving	Edward J. and Linda R. Kammerer	Bruce D. and Kathryn J. McClintock	Joseph T. and Welcome Ann Mezo	Scott A. Mowrey and Heidi M. McCotter	Mary Nolan	David J. Peel
Denton Boyd Hanson and Liza Stoltz Hanson	Eleanor M. Hipson	Eleanor M. Hipson	Will a Y. Kampman	Steve C. and Mary Lou Luciano	Thomas D. Irwin	Will a Y. Kampman	Kassie A. McClintock	Vasco Millan and Tatyana Millan Garcia	Patricia A. Moynihan	Patricia A. Nolan	Anna Pela
Gloria M. Harnish	Lynda J. Hirota	Lynda J. Hirota	Eugene J. and Dolores E. Kamrass	Dorothy M. Luhrs	Bonnie Isgar	Bonnie Isgar	James R. and Mary C. McConnell	Betty M. Miller	John and Anne Marie Mueller	John and Gwendolyn Noland	Robert L. and Irmgard E. Pence
A. Gordon Harrington	Thayer Hirsh	Thayer Hirsh	Gail Kane	Joan C. Lund	Haruko Ishiyama	Haruko Ishiyama	William C. and Shirley A. McCracken	Cheryl L. Miller	Matthew Mueller	Maurice and Joanne Noll	Catherine A. Peraino
Charles N. and Alice J. Harris	Ann Hix	Ann Hix	Arnold R. and Linda Reinstein Kaplan	George R. and Patricia A. Lyman	Barbara M. Jacobi	Barbara M. Jacobi	Karen M. McCreedy	Edward and Marilyn Miller	Linda Mulligan	Thomas L. and Wendy R. Norfolk	Russel Perez
Harold D. and Eunice B. Harris	Judith A. Hoage	Judith A. Hoage	Linda Reinstein and Arnold R. Kaplan	Denice K. Lyon	Katherine M. and Winfred O. Jacobs	Katherine M. and Winfred O. Jacobs	William H. McCreary	Henry G. Miller	Victor J. and June M. Mullins	Victor J. and June M. Mullins	Eugene and Aileen Perkins
Janice M. Harris	Kenneth K. and Mona L. Hoehner	Kenneth K. and Mona L. Hoehner	Kathleen D. Kardok	Robert E. and Joan K. Lyon	Lou and Patricia Jahde	Lou and Patricia Jahde	Michael L. McCue	Jeffrey B. Miller	Anita M. Murano-Sweetman	Michael D. and Shirley B. Nosler	William J. and Patricia C. Nottingham
Marianne Harris	Earl and Maxine Hoy	Earl and Maxine Hoy	Richard J. and Mary S. Karlin	Lee Mabery	Robert L. and Inez J. Jefferies	Robert L. and Inez J. Jefferies	Lu McDaniel	Larry W. Miller	Thomas and Jeannette Murgatroyd	William J. and Patricia C. Nottingham	Charles F. and Dorothy R. Perry
Shannon Harris	Tracy and Joyce Hofeditz	Tracy and Joyce Hofeditz	Sara L. Katz	Daniel and Colleen Maciver	Kate Jeffrey	Kate Jeffrey	Gertrude H. McDermott	Suzanne L. Miller	Edmund P. and Genevieve M. Murphy	Edmund P. and Genevieve M. Murphy	Larry D. Pershing
William R. and Pamela D. Harris	Barbara R. Hoffman	Barbara R. Hoffman	Elaine M. Kaufman	Judith P. Macomber	James J. Jeffreys	James J. Jeffreys	Matthew McDole, Jr. and Sandra Kohrs	Walt L. Miller	Margaret L. Murphy	Margaret L. Murphy	Amy L. Peterson
Paul and Rosemarie Hartsch	Denise Hoffman	Denise Hoffman	James C. and Patricia J. Kaufman	Dorothy Macrum	Robert L. Jeffries	Robert L. Jeffries	William L. and Margaret J. McElroy	Inge J. Millett	Wynona Murphy	Wynona Murphy	Gwendolyn L. Peterson
Robert A. Harvey	Roxie L. Hogge	Roxie L. Hogge	Stephen and Nellie Kaufman	Richard J. Madden and Margaret A. Delany	Marie D. Jenkins	Marie D. Jenkins	Charles L. McElwain	Michael J. and Michelle E. Minatta	Colleen Murray	Colleen Murray	Robert C. Peterson
Anne S. Hatcher	Marcia A. Hogue	Marcia A. Hogue	Joanne Marks Kauvar	Allison Cook Madison	Dennis K. and Sharon K. Jenkins	Dennis K. and Sharon K. Jenkins	Amy McFadzean	Robert Minkin	Dorothy Murray	Dorothy Murray	Gary Petrich
Judith A. Hatfield	Joseph C. and Nancy A. Holcomb	Joseph C. and Nancy A. Holcomb	John M. and Barbara B. Keables	Ruby H. Madison	Joeshp C. and Nancy A. Holcomb	Joeshp C. and Nancy A. Holcomb	Patricia McFarland	Jacqueline P. Mintener	Michael Murray and Lori Matiella-Murray	Michael Murray and Lori Matiella-Murray	Allan B. Noyes
Allison Hawkes	Raul Holguin	Raul Holguin	Dana M. Keefe	David J. Mafille Quarton	Paul and Rosemarie Hartsch	Paul and Rosemarie Hartsch	Bradley and Jennifer McGovern	Garrett Mitchell	Patrick and Mary Murray	Patrick and Mary Murray	Leo and Patricia O'Connor
Maxine Hawkins	Bobbi L. Holliday	Bobbi L. Holliday	William R. and Eleanor K. Keefer	John J. Mahorski	William R. and Eleanor K. Keefer	William R. and Eleanor K. Keefer	Patricia A. McGranor	Patricia A. Mitchell	Sally S. Nadel	Sally S. Nadel	Patrick W. O'Driscoll
Don E. and Dolly L. Hawks	Don E. and Dolly L. Hawks	Don E. and Dolly L. Hawks	Gail M. Keeley	Carl E. and Kristine M. Maier	Don E. and Dolly L. Hawks	Don E. and Dolly L. Hawks	Allison McGraw	Ronald E. Mitchell	Erma Nagel	Erma Nagel	Bonita P. Pfeiffer
Emmett and Joan Haywood	Carl W. Holzer	Carl W. Holzer	Thomas W. Keeton	Ginger Makela	Harry E. Johnson	Harry E. Johnson	Claudia McGuire	Catherine L. Mlnarik	Steven Nagy	Steven Nagy	Ronald R. and Marie M. Pfister
Suneeta Hazra and Todd Mair	Charles Homsher	Charles Homsher	Crystal Keim	Frieda Makovsky	Helen M. Johnson	Helen M. Johnson	Bruce and Debra McHugh	Laura J. Moche	Don and Beth Nail	Don and Beth Nail	Barbara J. Olivero
Donald A. and Linda S. Heagney	Timothy and Nancy Hopf	Timothy and Nancy Hopf	Dennis Keith	Carl E. and Kristine M. Maier	Ilene M. Johnson	Ilene M. Johnson	Reginald S. and Nancy J. McIntyre	John T. and Valorie T. Nance	John T. and Valorie T. Nance	John T. and Valorie T. Nance	Judith E. Ollman
Hearne Family	Thomas A. and Mary G. Horan	Thomas A. and Mary G. Horan	Jenna Keller	David J. Mafille Quarton	Thomas A. and Mary G. Horan	Thomas A. and Mary G. Horan	Billie J. McKinney	Mark A. and Leslie A. Molen	Paul and Gwen Nappo	Paul and Gwen Nappo	Ronald and Barbara Olson
Bob Heavers	Sue Horn	Sue Horn	Karen P. Kelley	John J. Mahorski	Karl D. and Deanna M. Johnson	Karl D. and Deanna M. Johnson	Martin E. McKinney	Chad A. Moller	William L. and Kathy N. Nash	William L. and Kathy N. Nash	Herbert K. and Marilyn J. Olson
Caroline I. Heberton	Wilder and Catherine Horneman	Wilder and Catherine Horneman	Stephen A. and Jill K. Kelley	John J. Mahorski	Kim D. Johnson	Kim D. Johnson	Maynard S. and Maxine E. McKinney	Frank and Carla Mondragon	Ray R. Nassimbene	Ray R. Nassimbene	Charlene Olssonowicz
George S. and Karen A. Hecomovich	Scott Horowitz	Scott Horowitz	Inez E. Kellogg	John J. Mahorski	Matthew Johnson	Matthew Johnson	Sandra K. McKone-Beeson	Jules and Lynn Mondschein	Christine A. Nast	Christine A. Nast	Charles G. and Barbara E. O'Neill
Peggy E. Hedin	Lisa Horton	Lisa Horton	Jane M. Kellogg	John J. Mahorski	Peter Johnson	Peter Johnson	Thomas Powers and Jeanne McLaughlin-Powers	Bruce and Linda Montalvo	Doris A. Nau	Doris A. Nau	Nancy O'Neill
Timothy J. Heine	R. B. Horton	R. B. Horton	Edward Kelsch	John J. Mahorski	Robert E. and Mary J. Johnson	Robert E. and Mary J. Johnson	Clyde McLennan and Glenda Prosser	J. R. and Natalie V. Montecalvo	Shelley Navarre	Shelley Navarre	Walter H. and Geneva H. Oppenheim
											Bradford and Jean Piersma

Elizabeth Piester	Edward and Jane Reilly	Robert and Sylvia Rottman	Marshal and Carol Scherba	Michael Shepherd	Manny Sotelo, Jr. and Diana Sotelo	Charles R. and Delores M. Stump	Sue Tiezzi	Diane Verrilli	Michael and Hedva Weinberg	George and Marjorie Wisecup
Stephen and Carmell Pietrafeso	Edward J. and Therese M. Reiner	Warren Rovetch	Ralph Scheuerman	J. M. and M. J. Sheppard	Don and Rhonda Sothman	Beulah Ward Stutz	Joseph P. and Elizabeth R. Timmer	Doris Vicars	Jeanne M. Weis	Janet L. Wismann
Donald R. and Corrine O. Pinal	Leslie Ann Reingold and Thomas Edward	Lester J. and Carola C. Royal	Rebecca Schilling	Michael P. and Elise L. Sherva	P. J. Soukey	John F. and Judith L. Sullivan	Leslie S. Tjarks	J. Victor and Ann C. Vifquain	Richard and Wendy Weiskopf	John and Debby Witner
Helen L. Pippin	Eskelson	Josh Rubin	Stuart and Ida Schneck	Gerald and Janet Shin	Sheila Spadafora	Vicki Sullivan	Dale J. Tolan	John H. and Joyce V. Vigil	Betty M. Wells	Jens P. and Carla J. Witt
Charles Pippitt	Marj Reinhardt	Lisa A. Rucker	Anthony Schoenberger	Phillip S. Spain	Phillip S. Spain	Joe and Carol Suman	Ray C. Vigil	Thomas and Mary Wittman	Andrea M. Welte	Thomas and Mary Wittman
Hubert K. Plant	Ann Reinstein	Michael H. Rudeen	Christopher M. Schoeneck	Donette L. Sparks	Donette L. Sparks	Michelle S. Summers	Delfino and Lupe Villa	Don B. and Joann M. Wendell	Don B. and Joann M. Wendell	Lilla J. Woertendyke
Charles H. and Karen M. Pless	Boyd C. and Barbara J. Rembe	Rica Ruimy and Herbert Schulz	Robert and Carolyn Schoenfeld	Amy Spatz	Richard M. and Nancy N. Sundeen	Dennis J. Tomlin	Shirley E. Werden	Shirley E. Werden	Shirley E. Werden	T. D. and Claire L. Woessner
Sean P. Pocock	Barbara Remund	Ramona E. Rumley	E. Laurie Scholl	Philip E. Shuler	Anne M. Sunderwirth	Charles D. and Iris H. Topkis	Robert L. and Esther B. Wershaw	Robert L. and Esther B. Wershaw	Robert L. and Esther B. Wershaw	Richard W. Wolf
Paul E. and Betty I. Poitras	Liesl and Scott Renick	Jon and Janet Runberg	Alex N. Schroeder	Barry and Jetta Siegel	Diana Suslak-Spriggs	Mike and Maggie Torley	Laura A. Wesenberg	Laura A. Wesenberg	Mike and Maggie Torley	Stephen and Marcella Wolf
Helen M. Pollex	Debbie S. Rens	Mary Keely Runge	Dennis Schroeder	Susan B. Signorella	Irwin M. and Barbara F. Susan	Marcos and Helen Torres	Thomas B. and Rosemary A. Wesnidge	Thomas B. and Rosemary A. Wesnidge	Irwin M. and Barbara F. Susan	Charles and Earlene Wolfers
Larry and Donna Polzin	Karen Rensink	Kris Russel	Don Rhoades Schroeder	Mary Ellen Sikora	Ludvik Z. and Katherine H. Svoboda	Christopher G. Town	Carol Wethington and Leona E. Lewis	Carol Wethington and Leona E. Lewis	Ludvik Z. and Katherine H. Svoboda	Carl Wolsleben and Glenda Hale-Wolsleben
Charlotte Ponce	Therese M. Revitte	Robert M. and M. Ann Russell	Gabrielle P. Schroeder	Diane R. Silcott	Arnold L. and Amy L. Swartz	Tanna C. Townsend	Rick and Debi Wood	Rick and Debi Wood	Arnold L. and Amy L. Swartz	Rick and Debi Wood
L. J. and Jeanette O. Porter	Thomas V. Reynolds	Marilyn A. Rust	Doris Schrupp	Mary C. Sills	Randy D. Swensen	Jack E. and Joyce M. Tracy	Pamela D. Wooden	Pamela D. Wooden	Randy D. Swensen	Pamela D. Wooden
Steven J. Posavec	Connie H. Rezec	Timothy A. and Kristin E. Rust	Karen L. Schuchman	Kay E. Silverberg	Moe F. and Nahid F. Tabrizi	Richard and Jeanette Traudt	Darrell W. and Linda C. White	Darrell W. and Linda C. White	Moe F. and Nahid F. Tabrizi	Robert F. Woods
Lawrence and Theresa Pracht	LeRoy K. and Beverly J. Rhynard	Kenneth and Sally Ruter	Norma Schuette	Seymour and Betty Jane Simmons	Alaurice Tafoya-Modi	Carolyn A. Trent	Michael D. and Ann E. Worley	Michael D. and Ann E. Worley	Alaurice Tafoya-Modi	Michael D. and Ann E. Worley
Ines M. Prator	William A. and Karen L. Rich	Karen Ruthberg and Gordon Burt	Rita J. Schuler	Dorothy M. and W. C. Simon	Sander Talbot	Rudolph W. and Marybeth L. Trenton	Roger L. and Kathryn J. Woskowicz	Roger L. and Kathryn J. Woskowicz	Sander Talbot	Roger L. and Kathryn J. Woskowicz
Donald A. and Jennie F. Prickett	Donald and Elyse Richards	William P. and Joanne M. Ruzzo	Jurgen and Sheila Schuler	Mary L. Simpson	Anne E. Talich	R. Bruce and Velma Trimble	Roy and Barbara Wright	Roy and Barbara Wright	Anne E. Talich	Roy and Barbara Wright
William R. and Judith O. Proctor	Delores V. Richardson	Suzanne B. Ryan	Frank L. and Gayla A. Schulte	Robert N. Sinclair	David W. Talmage	Ira Tropp	John and Carol Wright	John and Carol Wright	Robert N. Sinclair	John and Carol Wright
Sandra A. Prodan	Lee Richardson	Christine A. Ryden	Julie J. and Todd V. Schulz	Sondra S. Singer	Laurie Tamm	Eric Triesdale	Wanda F. Wright	Wanda F. Wright	Lee Richardson	Wanda F. Wright
Arthur and Gladys Prokaski	Jill Erin Rickard	John F. and Gertha H. Sabus	John and Andrea Schumacher	Dixie Sipe	Debra A. Taryle	Phong Minh Truong	Jane C. Wroblewski	Jane C. Wroblewski	Jill Erin Rickard	Jane C. Wroblewski
David A. and Elizabeth A. Proski	Patrick Ridgeway and Kate Tynan-Ridgeway	Lisa Sack	Peter Sciaky	Dennis K. Sipes	Winston Tate	Elna L. Tuffield	Stephanie Wrotny	Stephanie Wrotny	Patrick Ridgeway and Kate Tynan-Ridgeway	Stephanie Wrotny
Janice M. Pryor	V. Joseph and Patricia A. Ridgeway	Richard C. and Joann L. Salay	Jane S. Scofield	Michael P. and Georgia E. Sipes	Deborah Tatum	Robert W. Turner	Margot F. Wynkoop	Margot F. Wynkoop	V. Joseph and Patricia A. Ridgeway	Margot F. Wynkoop
Sarah D. Purdy	Jinx Riedesel	J. R. Saldana	Blake L. and Heather S. Scott	Ronald D. and Deborah J. Skaggs	Lila Taylor	Barabra A. Tuzinski	Bernard and Bertha Yacovetta	Bernard and Bertha Yacovetta	Jinx Riedesel	Bernard and Bertha Yacovetta
Robert T. Haines and Ruth H. Purkaple	James Riesberg	Kerri J. Saliman and Cameron Weprin	Jann M. Scott	Richard C. Skaggs	Ben Tedesco and Marge Hoglin	Carolyn Tyler	Barbara J. Yeatermeyer	Barbara J. Yeatermeyer	James Riesberg	Barbara J. Yeatermeyer
Stephanie Quintana	Edward P. and Sharon J. Riker	Larry Salis	Mark R. and Margaret E. Seccombe	Eulalia Skinner	James and Sally Tegart	Cecy Umberger	Lynn A. Yetter	Lynn A. Yetter	Edward P. and Sharon J. Riker	Lynn A. Yetter
Donald E. and Rita M. Quist	Eleanor M. Riter	Herbert and Melanie Samenfeld	Randall J. and Tamara R. Seery	Ronald O. Slattery	Jane K. Terry	Kevin A. Utterback	Karen Yoor	Karen Yoor	Eleanor M. Riter	Karen Yoor
M. H. and Maryjane Raabe	Belinda Roberts	Ralph and Bonnie Sampson	Anthony Seganti	Wayne F. and Doris W. Sloan	Tammera D. Terry	Mitchell S. Uyeno	Adrienne Young	Adrienne Young	Belinda Roberts	Adrienne Young
Ross Rafferty	Thomas L. Robins	Louie M. and Jill J. Sanchez	Dora M. Seibold	Joan Nora Sloss	Sonia Teter	Samuel and Lillian Valdez	Sarah Younggren	Sarah Younggren	Thomas L. Robins	Sarah Younggren
Ronald T. and Kim M. Ragan	Albert and Melanie Robinson	Rose Ann Sanchez	Vera Selby	Kathleen Smith and David Reeder	Mel F. and Linda E. Thaanum	Gail Valentine	Karen M. Yule	Karen M. Yule	Albert and Melanie Robinson	Karen M. Yule
Kelly P. Rainey	Tony Robinson	Charles and Dorothy Sandberg	Dennis K. Smith and Pauline M. Smith-Pelliccino	Diane H. Smith	Lynn Thayer-Anderson and Robert Anderson	Jane M. Van Buskirk	Abelardo Yzaguirre	Abelardo Yzaguirre	Tony Robinson	Abelardo Yzaguirre
Michelle S. Ramirez	Luis A. and Amelia G. Roche	Catherine Sanders	Diane H. Smith	Elizabeth Anne Smith	Patti L. Estes Thielen	Norman D. and Karen E. Van Dyke	Margaret G. Zaker	Margaret G. Zaker	Luis A. and Amelia G. Roche	Margaret G. Zaker
Vishnu Ramsaran	Jessica Laurel Roe	Melvin W. Sanders	Damon E. and Gina M. Selvidge	Joanne Smith	Gary A. and Judy A. Thill	David and Terri Ann Van Landschoot	Richard J. Zarella	Richard J. Zarella	Jessica Laurel Roe	Richard J. Zarella
Dolores Randall	John D. and Patti L. Roenicke	Michael L. and Bernice A. Sandoval	Kathleen S. Sendgraff	B. David and Kelly J. Smith	Carol S. and Lowell R. Thomas	James L. Van Zandt	Terry and Constance Zarella	Terry and Constance Zarella	John D. and Patti L. Roenicke	Terry and Constance Zarella
Thelma Randon	John E. and Kathleen M. Rohde	Susan M. Sands	Kalen Seneshen	Lauri S. Smith	Chris Kent Thomas	Virginia Vance	Zsuzsanna Zborovszky	Zsuzsanna Zborovszky	John E. and Kathleen M. Rohde	Zsuzsanna Zborovszky
Steve and Lynne Ranes	La Vern Rohr	Robert A. Santilli	Ray and Opal Sensenig	Leeray J. and Susan C. Smith	Lowell and Olga Thomas	James C. and Patricia D. Vandermiller	Juanita H. Zellner	Juanita H. Zellner	La Vern Rohr	Juanita H. Zellner
Lorin G. and Connie H. Ransom	George H. and Jane W. Romberg	G. Saskiewicz	Christina M. Serafini	Leo W. Smith	Marilyn Thomas	Diane Vankeuren	Dolly A. Zengerle	Dolly A. Zengerle	George H. and Jane W. Romberg	Diane Vankeuren
Kyle J. Rappold	Johnney L. and Anita F. Romero	David S. and Judith A. Sauvageau	Angel Serrano	Lolly Block Smith	David and Debra Thomason	Sharon K. Vanlate	Monte J. Zenger	Monte J. Zenger	Johnney L. and Anita F. Romero	Sharon K. Vanlate
Susan F. Rardin	Jeffery L. Roofl and Stacy Newman-Roofl	Charles F. Savage	Bryan and Sarah Severns	Melony Smith	Carolyn J. Thompson	Martha Y. Varanzoff	Brian Ziminski and Hannia Madrigal	Brian Ziminski and Hannia Madrigal	Jeffery L. Roofl and Stacy Newman-Roofl	Martha Y. Varanzoff
June C. Rasmusson	John and Jean Root	Eileen J. Sawicki	Janet R. Seybert	Noel A. Smith and Yvonne V. Murphy	Diana L. Thompson	Vasil Vasileff	Ruth A. Zimmerman	Ruth A. Zimmerman	John and Jean Root	Vasil Vasileff
Stephen E. and Cheryl A. Read	Elgene Roper	Angela Scala	Lynn L. and Mark A. Shader	Samie Smith	Paul and Jean Thompson	John D. and Judith A. Vaulton	Steven L. and Barbara T. Zimmerman	Steven L. and Barbara T. Zimmerman	Elgene Roper	John D. and Judith A. Vaulton
John and Geraldine Redmond	Larry Rose	Albert W. Scarffe	Charlene J. Shaffer	Signe Smith	Michelle M. Thompson	Jerry and Dana Vecka	George E. and Linda M. Zoetewey	George E. and Linda M. Zoetewey	Larry Rose	Michelle M. Thompson
Jennifer L. Reece	S. Mariah Rose	Ettore T. and Margaret L. Scena	Gulalai K. Shah	Allan E. Snook	Michael Thomsic	Albert and Gayle Veinberg	Ann D. Zupancic	Ann D. Zupancic	S. Mariah Rose	Michael Thomsic
Thelma S. Reece	Jerome D. Rosen	Valerie Schaefer	Susan K. Shaner	Raymond L. Stranske	Donna L. Thomson	Mary G. Velasquez			Jerome D. Rosen	Donna L. Thomson
John E. and Barbara A. Reed	Edward F. and Debora G. Rosenfeld	Gertrude Schaffer	Robert and Twila Shankland	Marianne and Rebecca Strasheim	Chanida Thongplengsri	Ray and Angelina Velasquez			Edward F. and Debora G. Rosenfeld	Chanida Thongplengsri
Ofelia J. Reed	Rose M. Rospierski	Frederick C. Schaffer	Sheila Sharpe	Brandon P. and Anne E. Stratton	William and Joyce Thorn	Vatsala Venkatachalam			Rose M. Rospierski	William and Joyce Thorn
Lorene Reedy	Marvin L. Ross	John P. and Jeanne T. Schaffer	Dawn Shaw	Scott C. Strauss	Jan Thornton	Mildred L. Thorp			Marvin L. Ross	Jan Thornton
Suann Reeves	Joseph R. and Pat S. Ross	Robert and Concetta Schaible	Michael P. Sheehan	Russ and Cynthia Strecker	Russ and Cynthia Strecker	Timothy Threlkeld and Patricia Hakala			Joseph R. and Pat S. Ross	Russ and Cynthia Strecker
Jacob and Sarah Rose Regan	Celeste J. Rossmiller	Warren F. Scharf	Thomas and Diana Sheldon	Larry L. and Cassandra J. Strotheide	Larry L. and Cassandra J. Strotheide	Jo Ann Tibbs			Celeste J. Rossmiller	Larry L. and Cassandra J. Strotheide
Dorothy Reibold	Carlo Rota	James R. Schatz	Gary W. and Barbara Ann Shenfish	Martin Strull	Martin Strull	Chris Tierney			Carlo Rota	Martin Strull
Laura M. Reich	Alison D. Rothrock	Pepper Schedin and Ren Anderson	Rojdah S. and Maryann W. Shephard	Harold D. and Bonnie L. Sorensen	Harold D. and Bonnie L. Sorensen				Alison D. Rothrock	Harold D. and Bonnie L. Sorensen

## Volunteers and In Kind donors

Meraj Abdul-Qadir  
 ABS Consultants  
 Erin Adesso  
 AECOM  
 Russ and Kim Albert  
 Dana Albright  
 Alcohol Monitoring Systems Inc.  
 Lorraine J. Alfini  
 Allonhill  
 American Furniture Warehouse  
 Anchor Blue  
 Christy Anderson  
 Jordan Anderson  
 Linda Anderson  
 Army and Airforce Exchange Services  
 Rennie Atancio  
 Theresa A. Atkins  
 Kirsten Bailey  
 Joyce Baker  
 Keeley Ballay  
 Casey F. Barnard  
 Neiel D. Baronberg  
 Steve M. Bassett  
 Harisha J. Bastiampillai  
 Kate Bateman  
 Doug Bausch  
 Cindy Beeks  
 Jan Beezley  
 Bella Italia Pizzeria  
 Mary D. Bergstrom  
 Best Buy  
 Blue Jeans Bar Corporation  
 Blue Spruce Concepts, Inc.  
 Andrea Bobb and Silvia Gregory  
 Beatriz Bonnet  
 Suzanne Boon  
 Gwen Borchert  
 Kelly Borchert  
 Renee Borchert  
 Botanica Wellness Center  
 Stacey Bowers and James Middleton  
 Danielle Bowker  
 Sally J. Boyson  
 Maxine Brady  
 Barbara Brant  
 Michael Joseph Brazelton  
 Coley Brenan  
 William D. and Margaret E. Breznay

Chris Brian  
 Megan Brislin and Family  
 Richard E Bristol  
 Eric H. Broecker  
 Jay Brown  
 Michael Brown  
 Randy Brown  
 Meghan Bruemmer Noraddin  
 Russ Burcham  
 Laurel Burke  
 Allonhill  
 Meaghan Burns  
 Brian J. Burrige  
 Kevin and Cate Byers  
 Cabinetry Showcase  
 Chris Cahill  
 Peter Calamari  
 Dean and Kellie Cale  
 Keren Call  
 Jane Cameron  
 Kirsten Bailey  
 CAN Insurance  
 Mike Carroll  
 Jaclyn K. Casey  
 Casey's Bistro and Irish Pub  
 Neiel D. Baronberg  
 Steve M. Bassett  
 Harisha J. Bastiampillai  
 Kate Bateman  
 Doug Bausch  
 Cindy Beeks  
 Jan Beezley  
 Bella Italia Pizzeria  
 Mary D. Bergstrom  
 Best Buy  
 Blue Jeans Bar Corporation  
 Blue Spruce Concepts, Inc.  
 Andrea Bobb and Silvia Gregory  
 Beatriz Bonnet  
 Suzanne Boon  
 Gwen Borchert  
 Kelly Borchert  
 Renee Borchert  
 Botanica Wellness Center  
 Stacey Bowers and James Middleton  
 Danielle Bowker  
 Sally J. Boyson  
 Maxine Brady  
 Barbara Brant  
 Michael Joseph Brazelton  
 Coley Brenan  
 William D. and Margaret E. Breznay

Chad Cook  
 Michael Cook  
 Mollie Cook and Mary Purdy Cook  
 COPIC Medical Foundation  
 Corepower Yoga  
 Gail Cowan  
 Ethan Cramer  
 Sharon Lee Crawford  
 Rachel Crews  
 Sheryl Crockett  
 John Cross  
 Cub Scout Den 9, Pack 39 Evergreen  
 Cummins Rocky Mountain  
 Jenny Cunningham  
 C.M. Currier  
 Lindsay Cutler  
 Alicia Cymbala  
 Faith Dahl  
 James Davis  
 Rick Dean  
 Kim DeGrande  
 Jeanne Dell and Family  
 Max and Tricia Dente  
 Denver Art Museum  
 Denver Metro Building Owners and Managers Association  
 Donna DeRyder and Dan Searcy  
 Jean DeVore  
 Philynda Dillard  
 Elizabeth Dohr  
 Linda Doner  
 Danielle M. Dorn  
 Amy Dressel-Martin  
 Dubin Family Foundation  
 Duran Family  
 Dan and Laura Eakin  
 Elaine and Tim Eaton  
 Allison Edwards  
 Rachael M. Einfeldt  
 Stanley R. Eilert and Paula G. Padilla  
 Allan Cohen  
 Nicholas Cole  
 Vicky Collins  
 The Collopy-Bach Family  
 Colorado Party Rentals  
 Colorado State Bank and Trust  
 Tina Colvin  
 Comcast  
 Configurations Office Interiors  
 Kathleen Conneen

Ellen Fox  
 Frame De Art  
 Franklin D Azar+Associates, P.C.  
 Front Range Eyecare  
 FTEN Inc.  
 Trina Fuller  
 Max and Andrea Fulton  
 FUZE BEVERAGE  
 Hope United Methodist  
 Jennifer Hotsenpiller  
 Jeremy A. Hotsenpiller  
 Don and Ellen Galarowicz  
 Paul Galloway  
 Kevin and Kristina Gedeon  
 Lorraine Genne  
 Michael and Kathie Gersch  
 Dan and Bre Gervel  
 Connie Giarratana  
 Gibson, Dunn & Crutcher LLP  
 Michael E. Gieger  
 Bonnie Ginther  
 Ria Gill  
 Judy E. Glazner  
 Good Shepherd Catholic Montessori  
 Amanda Graus  
 Kim Griggy  
 Mark Groshok  
 Daniel Grossman  
 Heidi Guetlein-McHugh  
 Casey Gunning  
 Karen Hafling  
 Carol Hall  
 Danielle M. Hall  
 Jennifer Hallam  
 Daniel Hamaan  
 Christine Hansen and Charlie Reish  
 Brianne Hanson  
 Harris Corporation  
 Kristy Harris  
 Stephanie Harrison  
 Brittany Hart  
 Alyson Hatten  
 Havern School  
 Katie Havranek  
 James Hay-Arthur  
 Laurel Haydon-Smith Messer  
 Harrison F. Hayes  
 Mary Hegy  
 Jill Hehr  
 Ryan Hellman  
 Suzanne Henson

Vanessa Henson  
 Ray Herr  
 April Herrer  
 Patty Herrick  
 Christine Herron  
 Larry and JoAnn Hesson  
 Teresa Holden  
 Hope United Methodist  
 Jennifer Hotsenpiller  
 Jeremy A. Hotsenpiller  
 James R. Lewis  
 Peggy Liao  
 Lincoln Financial, LTD  
 Lindenberger and Weins Families  
 Danielle Little  
 Rustin Locken  
 Paola Hubert  
 Miranda Logan  
 Los Dos Hermanos  
 Humanity for All  
 IBC Holdings, LLC  
 IHS Inc.  
 Illegal Pete's  
 Integrity Printing  
 International Facilities Management Association  
 Julia Jackson  
 Kelli Jantz  
 Catherine Jarvis  
 Chris and Kristy Jenkins  
 Jenni and Blue Families  
 Danette Juister  
 Vicki Kail  
 Kaiser Permanente  
 Jenny Katzenberg  
 Amy Kauffman  
 Jan Keating  
 Leslie Kelly  
 Patrick Kelly  
 Richard Kelmenson  
 Jennifer Kempe-Biermann  
 Ken's Reproductions  
 Mary Kershner  
 King Family  
 Patricia Kingery  
 Karen Kochanski  
 Kollar Family  
 Vladimir Kroupa and Barbara Cunningham-Kroupa  
 Lorraine Kubicek  
 Kent G. Kuhlmann  
 Beatrice Kye

Cynthia Lamb  
 Lapidow Family  
 Michael and Charla Leary  
 Leatherman  
 Robert Louis Lederer  
 Larry Leeman and Janice Campbell  
 Adrah Leitner  
 Hope United Methodist  
 Phyllis Lervig  
 Levi's/Dockers Outlet by Most  
 James R. Lewis  
 Peggy Liao  
 Lincoln Financial, LTD  
 Lindenberger and Weins Families  
 Danielle Little  
 Rustin Locken  
 Paola Hubert  
 Miranda Logan  
 Los Dos Hermanos  
 Humanity for All  
 IBC Holdings, LLC  
 IHS Inc.  
 Illegal Pete's  
 Integrity Printing  
 International Facilities Management Association  
 Julia Jackson  
 Kelli Jantz  
 Catherine Jarvis  
 Chris and Kristy Jenkins  
 Jenni and Blue Families  
 Danette Juister  
 Vicki Kail  
 Kaiser Permanente  
 Jenny Katzenberg  
 Amy Kauffman  
 Jan Keating  
 Leslie Kelly  
 Patrick Kelly  
 Richard Kelmenson  
 Jennifer Kempe-Biermann  
 Ken's Reproductions  
 Mary Kershner  
 King Family  
 Patricia Kingery  
 Karen Kochanski  
 Kollar Family  
 Vladimir Kroupa and Barbara Cunningham-Kroupa  
 Lorraine Kubicek  
 Kent G. Kuhlmann  
 Beatrice Kye



Christine Mendoza  
 Merchants Office Furniture  
 Rose Merson  
 Elizabeth Miller  
 Jacquelyn Y. Miller  
 Lacey Miller  
 David Milner  
 Judith Minderler  
 Manuel Miranda  
 Cornelia Moore  
 Eileen Moore  
 Greg Morgan  
 Kirsten Morgan  
 Jim and Patty Moss  
 Mother's and More, Parker/Castle Rock Chapter  
 James Mullen  
 Murray Motors  
 Gerald McKenzie  
 Laura G. Mutton  
 Hrishikesh R. Nair  
 Navy Recruiting District of Denver  
 Joel Neckers  
 Ray Nettleton  
 New Energy Salon

New Hope Baptist Church  
 Corey E. Nikoloric  
 Bonnie Niziolek  
 Andrew Noad  
 Jeff Nodland  
 Marilyn Northagen  
 Old Navy  
 Elaine Olson  
 Kari Olson  
 Marc Olson  
 On Time for Recovery, Inc.  
 Lance O'Neil  
 Tryl O'Neil  
 Charles Oppegard  
 Melinda O'Rourke  
 Hadley'anne and Joshua Ott  
 Otten Johnson Robinson Neff and Ragonetti  
 Michael and Ellen Pantaleo  
 Papa Mazzotti's  
 John and Eileen Pappas  
 Park Hill Adventure Preschool  
 Rosa Parga  
 Parsons Brinkerhoff

Pasquinis  
 Pearl Izumi  
 Jon Pederson  
 Rich, Sena and Tess Perego  
 Rita Perez  
 Jana Petrie  
 Gabariella Petrino  
 Karen Philabaun  
 Graham Phipps  
 Physician Health Partners  
 John and Barbara Plungy  
 Poate Family  
 Polar Field Services  
 Patty A. Polsky  
 Paul Polsky  
 Kevin Poole  
 Prana Yoga and Ayurveda Mandala Studio  
 Shell  
 Theresa Shieh  
 Scott and Marie Silverstein  
 Neal Simkowitz  
 Julia Simmons  
 Jo Slaga  
 Kim Smagala  
 Sue L. Smallwood  
 Janice Smit  
 Marsha Smith  
 Nadine Smith  
 Thomas J. Smith  
 Snooze  
 Anne Snyder  
 Thomas Snyder  
 Julie Sobetski  
 Source Office Products  
 Southlands Moms and Bubs  
 Spectrum Human Resources  
 Mark Speer  
 Kat Spencer  
 Sport Clips  
 St. Joseph Hospital  
 Starbucks Coffee Company  
 Kelly Stempihar  
 St. Killian's Cheese Shop  
 Robert L. Stofac  
 Jeff and Jessi Stoll  
 Strain Family  
 Scott C. Strauss  
 Kristen Sullivan  
 Tom Sullivan

Matthew Ryland  
 Tracy Saffer  
 Jynx Sanders  
 Mida Sandoval  
 Michael A. Sarche  
 Sandra A. Sauer  
 Janet Savage  
 Vicki L. Savery  
 Bear Sawkins  
 Schoon Family  
 Dennis Schroeder  
 Carol Schrott  
 Lisa Schwellenbach  
 Marie Scott  
 Sharon Scrofne  
 Steve Shankland  
 Shell  
 Theresa Shieh  
 Scott and Marie Silverstein  
 Neal Simkowitz  
 Julia Simmons  
 Jo Slaga  
 Kim Smagala  
 Sue L. Smallwood  
 Janice Smit  
 Marsha Smith  
 Nadine Smith  
 Thomas J. Smith  
 Snooze  
 Anne Snyder  
 Thomas Snyder  
 Julie Sobetski  
 Source Office Products  
 Southlands Moms and Bubs  
 Spectrum Human Resources  
 Mark Speer  
 Kat Spencer  
 Sport Clips  
 St. Joseph Hospital  
 Starbucks Coffee Company  
 Kelly Stempihar  
 St. Killian's Cheese Shop  
 Robert L. Stofac  
 Jeff and Jessi Stoll  
 Strain Family  
 Scott C. Strauss  
 Kristen Sullivan  
 Tom Sullivan

Sunflower Farmer's Market  
 The Surya Center for Integrative Psychiatry, Inc  
 Jeremy Susse  
 Craig Sweeney  
 Laurie Swihart  
 Jacqueline Ta  
 Target  
 Cynthia N.Tarkanian  
 Malcolm Tarkanian  
 Candice TerHark  
 Corky Terry  
 The Park Hill Seventh-day Adventist Church  
 The Decatur Group  
 Andy Thomas  
 TIAA-CREF Denver  
 Wanda Titus  
 Catherine Tomczuk  
 Chris and Stacy Tonelli  
 Melissa Triester  
 Autumn Trotter  
 Truchard Vineyard  
 Turner Construction Company  
 U Shampoooh  
 Lexi Udell  
 Wendy Ulbarri  
 Sharon Ulric  
 Larry and Ginger Underwood  
 US Bank  
 Travis Valentine  
 Gloria L. Van Sloun  
 Karen Vasquez  
 Roxanne Velasquez  
 Village Inn  
 Visa USA, Inc.  
 Beth Walker  
 Rich Walker  
 Walker-Gilman Family  
 Wal-mart Stores, Inc.  
 Debra Ward  
 Greg Wardle and Tom Wardle  
 Michele Waters  
 Scott A. Webber  
 Bonnie Webster  
 Kim Weins  
 Helen Weiss  
 Wells Fargo Business Credit  
 Cyndy West  
 Mike Weston

Westwind Management Group Inc  
 Marjorie Westwood  
 Rosalyn Wheeler-Bell  
 Dennis and Pamela White  
 Whole Foods Market  
 Scott Wiatrak  
 Allan B. Wicks  
 Mary Williams  
 Brittney Wilson  
 James B. Winston  
 Kim and James Woodruff  
 John Wright  
 Cherie Yager  
 Sharon Yinglin  
 Your Castle Real Estate  
 Joe Zagyi

*The Coalition is grateful for all gifts. We were fortunate to have many more generous supporters than could be recognized in this publication. For a complete list of donors, please view this annual report online at [www.coloradocoalition.org](http://www.coloradocoalition.org)*

# CONSOLIDATED STATEMENT OF ACTIVITIES

Colorado Coalition for the Homeless  
Renaissance Housing Development Corp.  
Renaissance Property Management Corp.  
Year ended December 2009

## Revenues

Contributions	\$	6,362,929
Grants		21,125,306
Programs		3,741,762
Development Fees		874,830
Other		3,479,487
Interest		767,390
<b>Total revenues</b>	<b>\$</b>	<b>36,351,704</b>

## Expenses

Program Services:		
Health Care		18,549,595
Housing		12,094,470
Property Management		1,645,631
Statewide Education and Advocacy		381,619

**Total Programs** \$ **32,671,315**

## Supporting Services

Management		2,528,740
Fundraising		637,364
Total Support		3,166,104

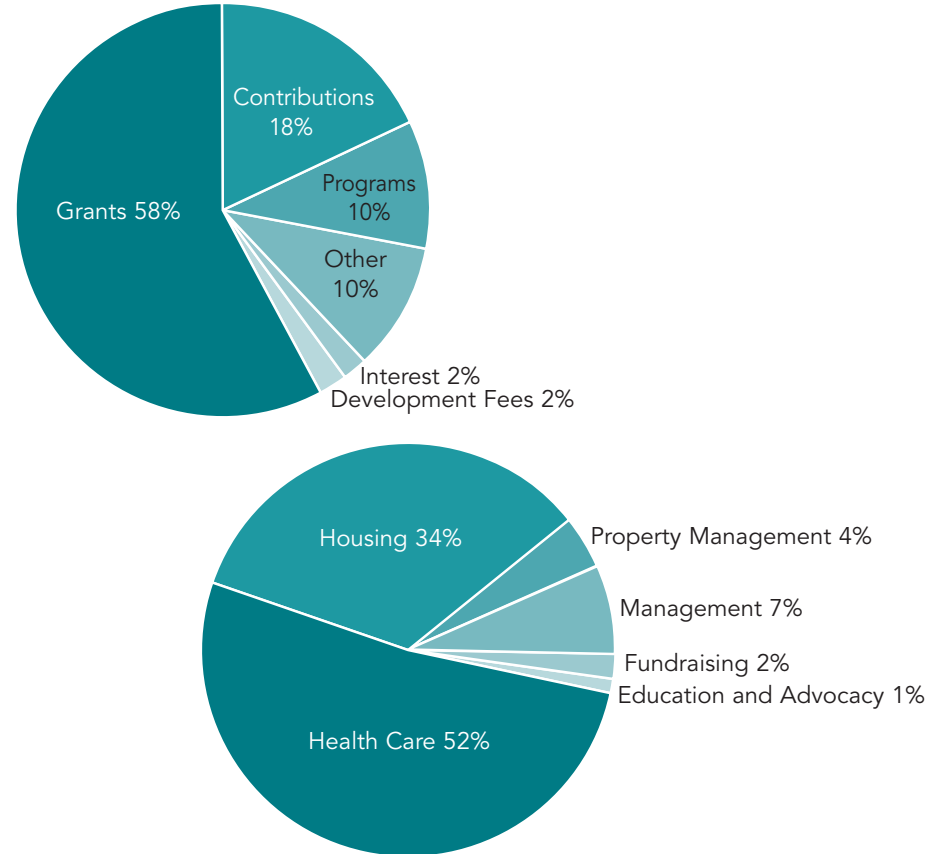
**Total Expenses** \$ **35,837,419**

Increase (decrease) in Net Assets 514,285

**Net Assets December 2008** \$ **13,383,197**

**Net Assets December 2009** \$ **13,897,482**

**91% of every dollar goes to programs**





## HOW TO HELP

Support the Colorado Coalition for the Homeless and help provide valuable medical, educational and housing services in urban and rural communities across Colorado. The Coalition dedicates 91% of every dollar raised to client programs and services. Please visit us at [www.coloradocoalition.org](http://www.coloradocoalition.org) to learn more.



2111 Champa Street  
Denver CO 80205  
303-293-2217  
[www.coloradocoalition.org](http://www.coloradocoalition.org)



SPRINT  
Printing sponsored by Sprint Denver

Photographs by Dennis Schroeder